

St. Leo

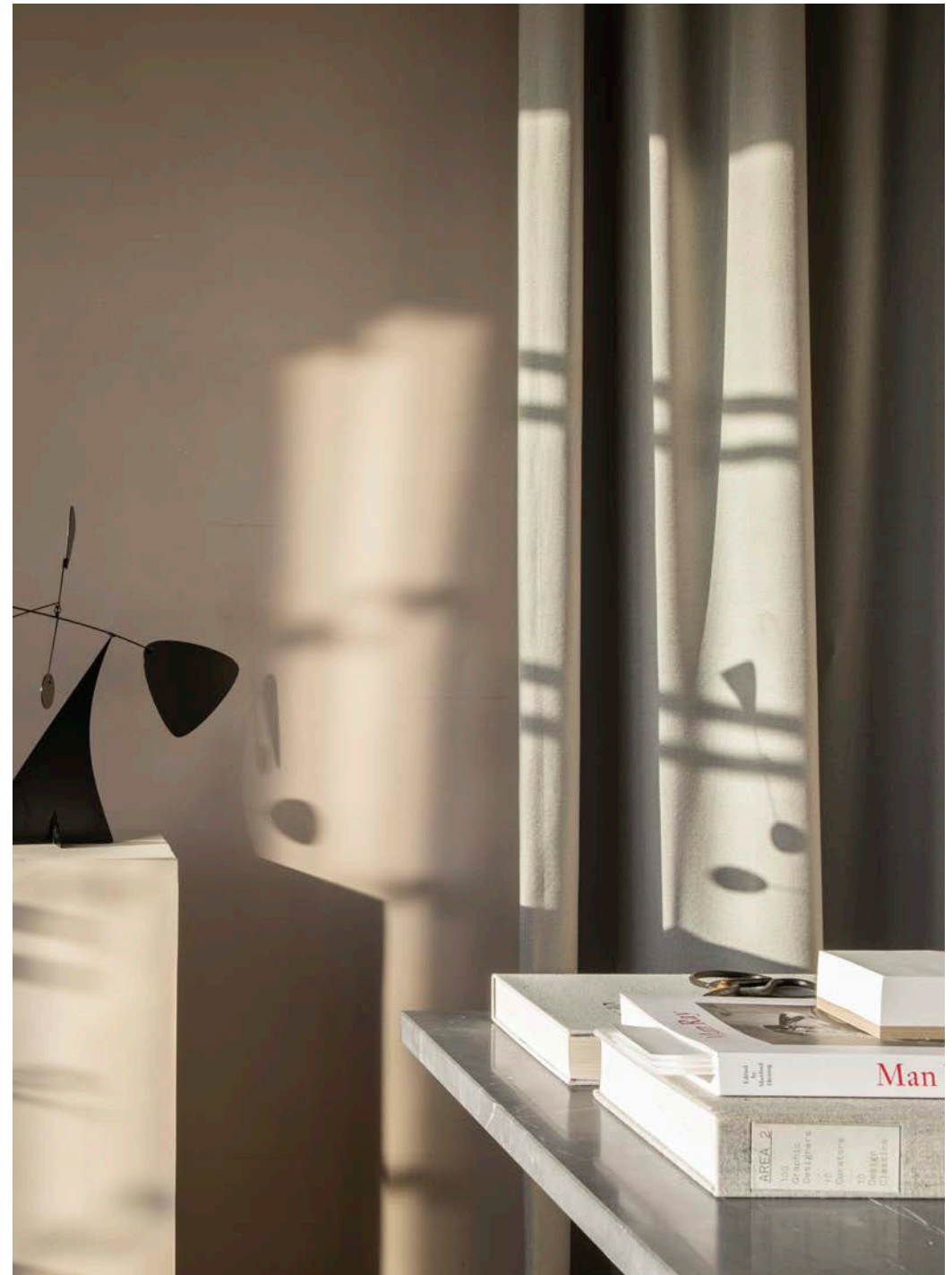
Introducing St. Leo

Inspired by culture and derived from nature, St. Leo creates premium, eco-friendly finishes that elevate the experience of architectural spaces.

Established in 2019 in Denmark, St. Leo draws upon Scandinavian heritage and craftsmanship to produce contemporary paint and plaster from the finest natural minerals with a focus on sustainability, tactility and understated elegance.

St. Leo's versatile products can be applied to small creative projects, interior spaces and large commercial buildings.

St. Leo is one of the first companies to receive the Nordic Swan Ecolabel for a coloured, pre-mixed plaster.



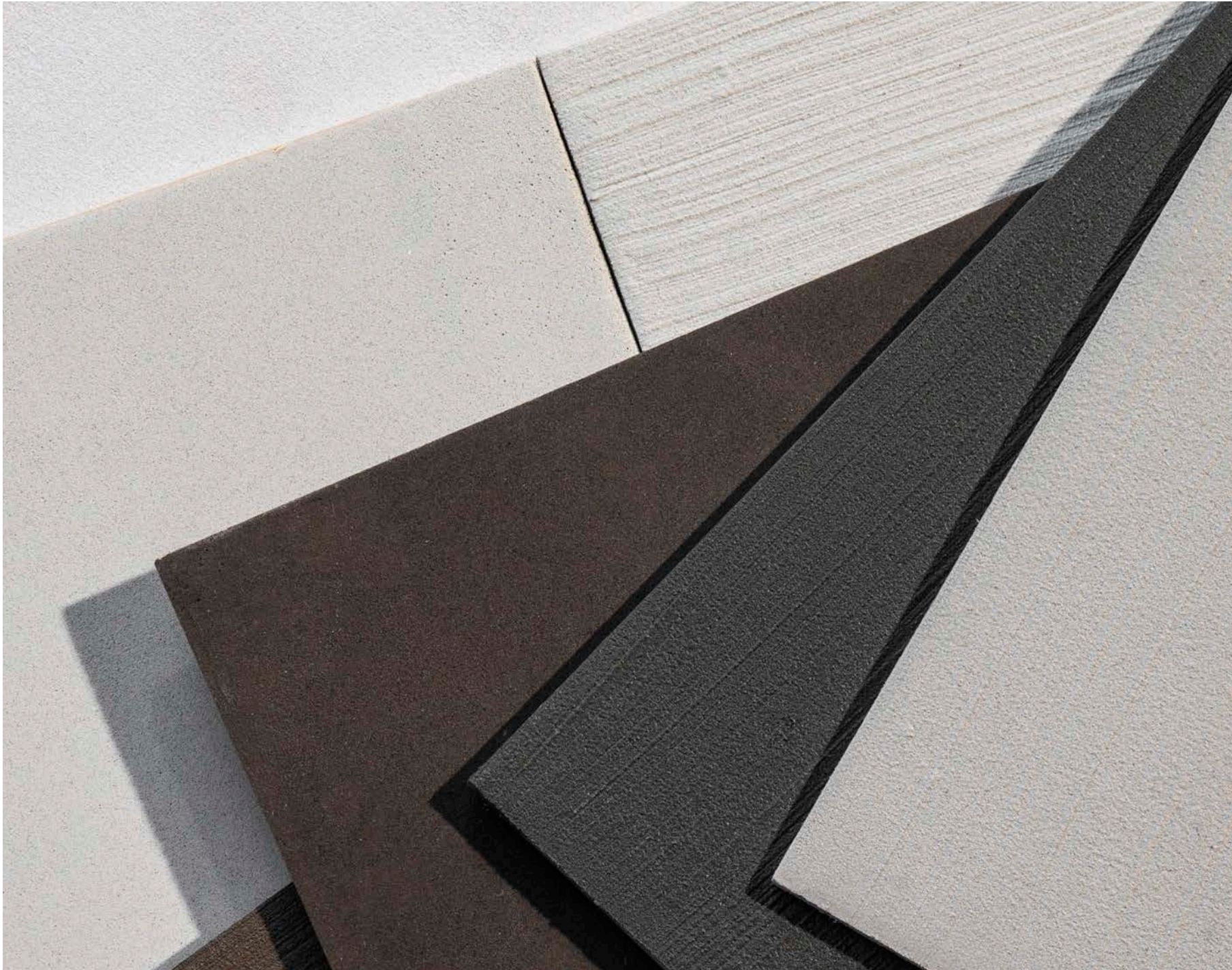
Dolomite Plaster

St. Leo's debut Dolomite Plaster collection features 18 coloured plasters for use on interior walls and surfaces. Developed by expert painters and suppliers in Denmark, our plaster consists of premium, eco-friendly materials: Super-fine, crushed Dolomite stone is combined with recycled ash and natural pigments to create true, deep colour profiles and a durable finish that is beautifully soft to touch.

St. Leo's pre-mixed, coloured plasters are packaged in unique rectangular containers, ready to be applied onto interior walls with a roller and trowel, and finished with a trowel or brush to create a variety of elegant textures.

In addition to our core range, St. Leo works with clients and creatives to develop bespoke, site-specific solutions from an almost limitless spectrum.





St. Leo Dolomite Plaster in
Via Lovanio, Herluf Trolles
Gade and a custom-made
warm brown.

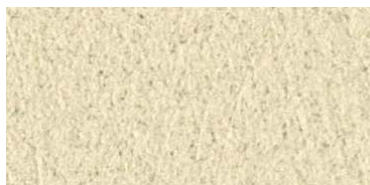
DOLOMITE PLASTER:
STANDARD COLOUR SELECTION



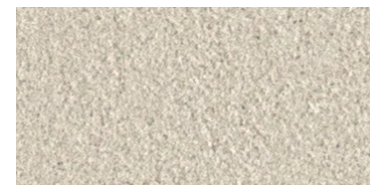
HERLUF TROLLES GADE
10011100



RUE DE LA PERLE
10008100



VIA DANTE
10005100



VIA AURELIA
10007100



RUE BOTTERO
10002100



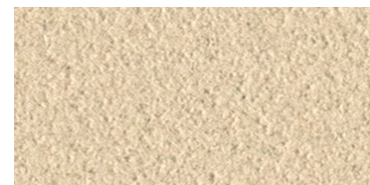
SUNDKROGSGADE
10017100



VIA CENAMI
10004100



KRYSTALGADE
10016100



BREDGADE
10001100



ADMIRALGADE
10010100



RUE LOUBET
10006100



GAMMEL STRAND
10014100



ÅRHUSGADE
10013100



PRINSESSEGADE
10015100



MAGSTRÆDE
10000100



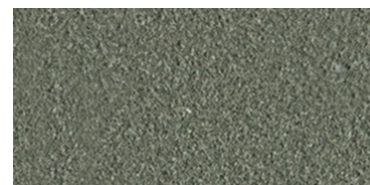
VIA LOVANIO
10009100



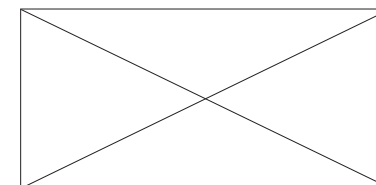
LANGELINIE
10012100



RUE ALÉZARD
10003100



ANCOATS
10018100



CUSTOM COLOUR
MIXED BASED ON NCS CODE





St. Leo Dolomite Plaster in Ancoats, created in collaboration with YOUTH STUDIO. The colour is inspired by the industrial, dark green paint that adorns urban architecture in the Manchester neighborhood of Ancoats.

Made from Nature

Dolomite Plaster is the result of a carefully-developed recipe that has a minimal impact on the natural environment, whilst transforming the built environment.

Eco-friendly, non-toxic and sustainable, Dolomite Plaster is one of the first products of its kind to receive The Nordic Swan Ecolabel—a leading international sustainability certification.

Graded at a very low-VOC, the fine particles are non-toxic and safe for use indoors.

St. Leo is constantly working to improve its ecological practices and partners with leading, ISO certified suppliers at the top of the global sustainability index; suppliers large enough to create meaningful and positive change in the industry.

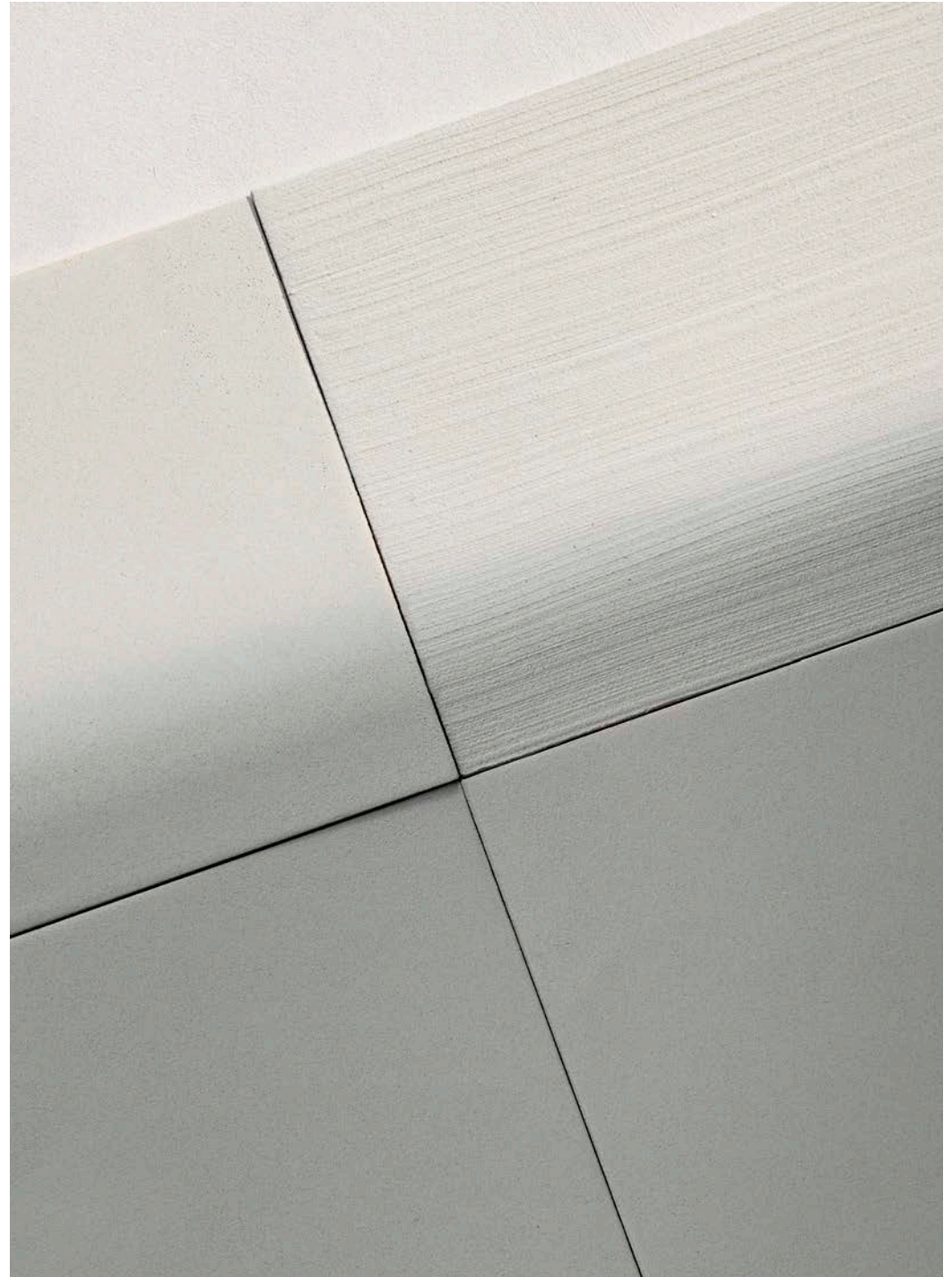


Perfectly Imperfect

We believe the imperfect, raw beauty of nature should be celebrated rather than overtly refined, and we seek to retain this authenticity in our work.

St. Leo's colours are developed by hand from natural pigments. By working with the organic variations of our raw materials, each batch bears a slightly unique colour profile.

Whilst St. Leo does not strive for clinical perfection, we are uncompromising about quality. St. Leo's product developers collaborate closely with suppliers to guide, test, and improve every batch—carefully assessing the quality at every stage of the process.



Project: The Audo

St. Leo unveiled its Dolomite Plaster collection in 2019 at Copenhagen's award-winning community space, The Audo, in collaboration with Jonas Bjerre-Poulsen of Norm Architects and Nathan Williams of *Kinfolk* magazine. Together, Jonas, Nathan and the St. Leo team created 10 bespoke Dolomite Plaster colours for the walls of the space, drawing inspiration from the area's rich heritage.

Since opening, The Audo has received interior design awards from *Bo Bedre*, European Property Awards and Ahead Awards.

[View more.](#)

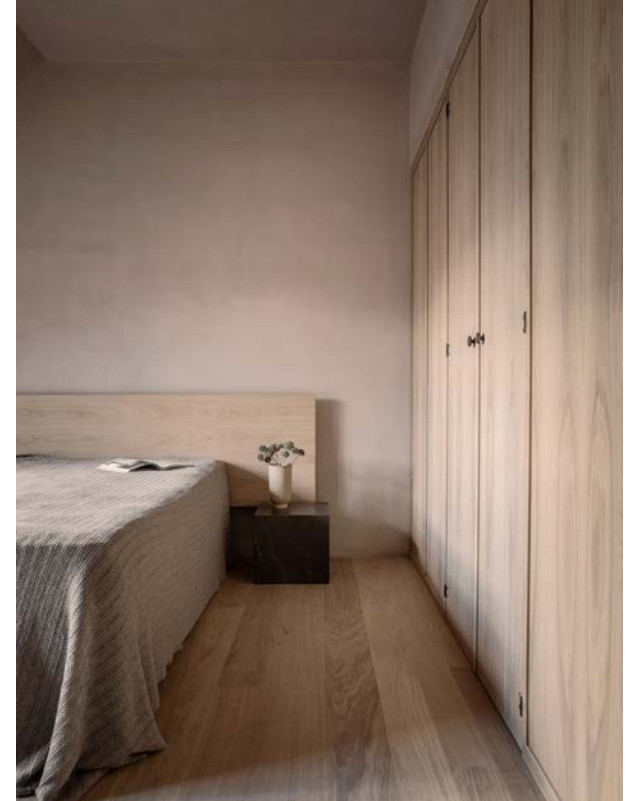
Photos: Monica Steffensen, Sylva Bocsa and Jonas Bjerre-Poulsen.





The Audo exemplifies St. Leo's passion for collaboration. In this project, a group of talented architects, stylists and product developers united together to build a space that inspires all who walk through its doors.

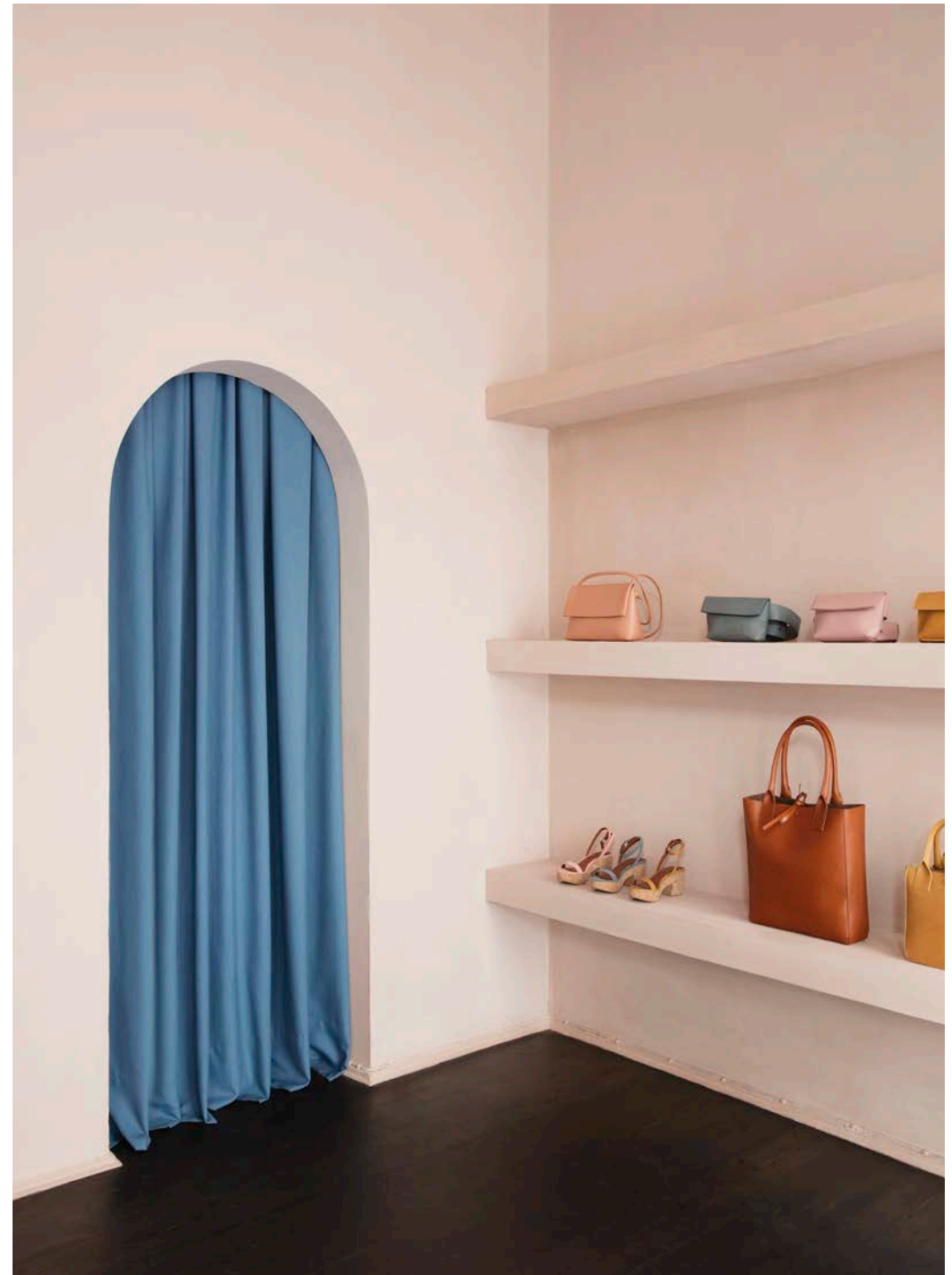
PROJECT:
THE AUDIO, COPENHAGEN



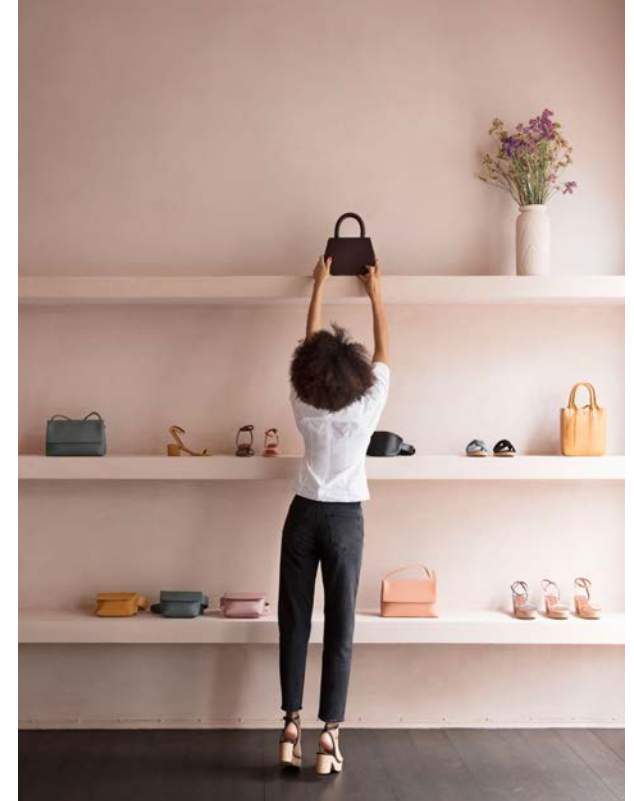
Project: Yvonne Koné

In 2019, St. Leo collaborated with celebrated accessories designer Yvonne Koné on the interior renovation of her Copenhagen boutique. For the project, St. Leo developed a bespoke Dolomite Plaster colour for the walls and display surfaces that would complement Koné's collection of luxury leathergoods.

[View more.](#)



Photos: Line Thit Klein



Project: Garden Studio

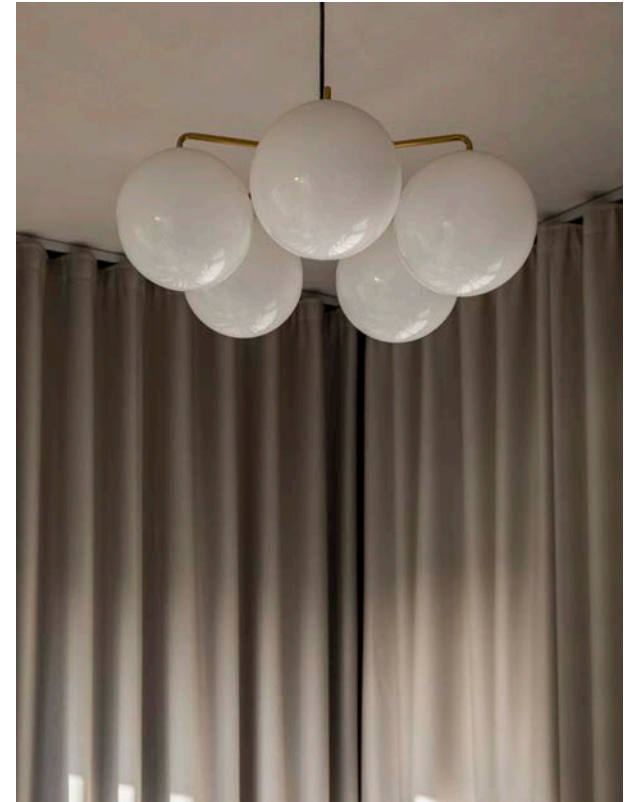
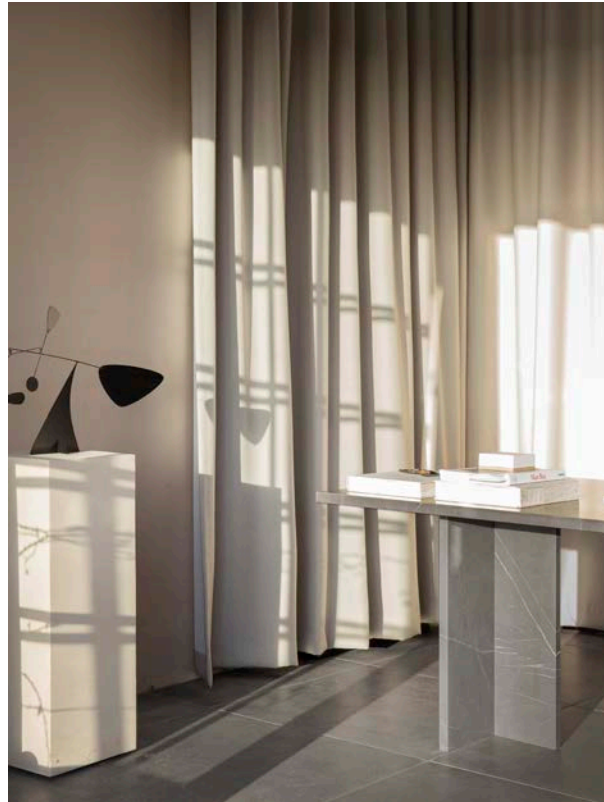
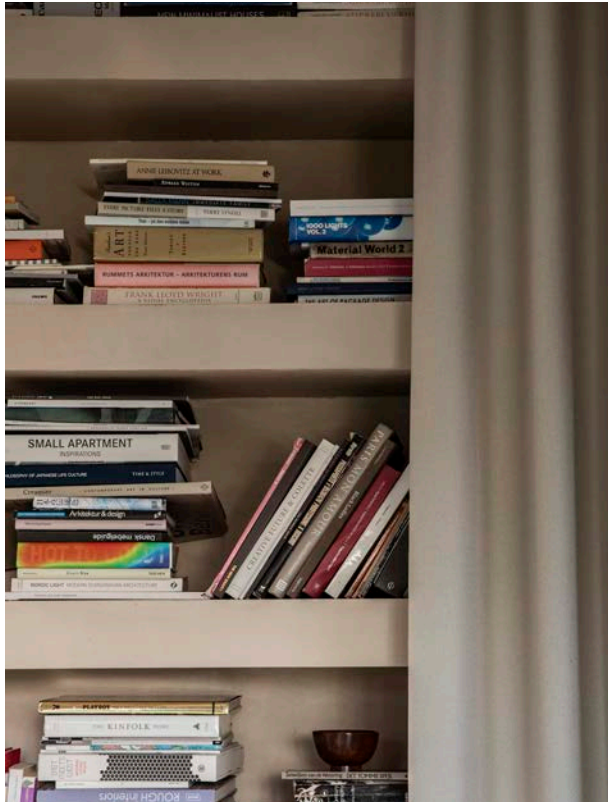
Danish architect Jonas Bjerre-Poulsen chose a custom shade of St. Leo Dolomite Plaster for the walls of his garden studio located near the Danish seaside. The studio is a light-filled, calming space designed in neutral colours—the perfect backdrop for new ideas to form.

[View more.](#)

Photos: Jonas Bjerre-Poulsen



PROJECT:
GARDEN STUDIO, DENMARK



WEBSITE:
STLEONTERIORS.COM

EMAIL:
INFO@STLEOINTERIORS.COM

PHONE:
+45 53740622

INSTAGRAM:
@STLEOINTERIORS

