

**massimo**  
copenhagen





# massimo

## copenhagen

Massimocopenhagen was founded in 2001 by Mads Frandsen. Our aim is to offer our customers sustainable rugs, excellent quality, first class service and competitive prices.

The creative team of massimocopenhagen is developing high quality sustainable handknotted and handwoven rugs for domestic and contract use. The production is based on centuries-old tradition and technique, seeking to create a dialogue between the established and the experimental, the past and the present. We are using the finest natural yarns, creating rugs that we believe to be precious, unique and having a long lasting value.

We love what we do and enjoy each step of our journey!

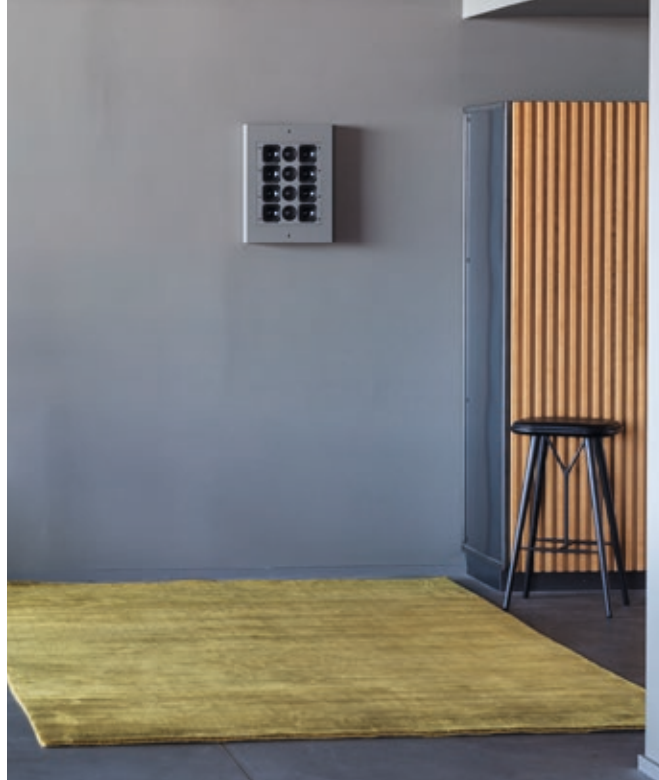
**massimocopenhagen**





## EARTH BAMBOO

Massimo EARTH-BAMBOO rug is made of best quality New Zealand wool mixed with Bamboo fibres. The combination of New Zealand wool and Bamboo gives a very durable rug with a light shine which is easy to maintain. The quality of the fibres minimizes peeling to almost nothing. The production of Bamboo is sustainable as it thrives without any pesticides, New Zealand wool is made with animal friendly practices and both fibres are sustainable, natural and biodegradable and thus very eco-friendly materials. Underlay carpet is recommended. Suitable for domestic and contract use.



EARTH BAMBOO | *chinese yellow*



*chinese yellow*



*terra cotta*



*concrete grey*



*warm grey*



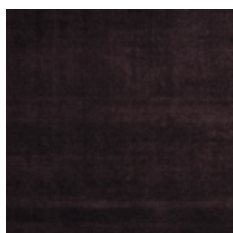
*charcoal*



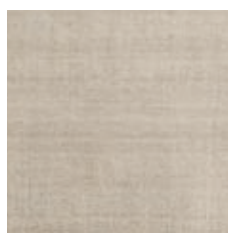
*vibrant blue*



*nougat rose*



*blackberry*



*soft grey*

**Quality:** Handwoven 50% New Zealand wool / 50% Bamboo

### Available sizes:

140 x 200 cm  
170 x 240 cm  
200 x 300 cm  
250 x 300 cm  
300 x 400 cm\*  
Wall-to-wall carpets

**Custom sizes:** Yes

**Pile height:** 10-11 mm

**Weight:** 3,75 kg/m<sup>2</sup>

**Size variation:** +/-3%

**Warranty:** 2 years

### Certifications:

Colorfastness to light:

ISO 105-B02-grade 5

Flammability:

16CFR 1630 (FF-1-70)

Production: SA 8000

\*only warm grey, vibrant blue, soft grey, nougat rose & concrete grey







EARTH | *cafe cream*

## EARTH

Massimo EARTH rug is made of best quality New Zealand wool which adds natural beauty and ensures easy maintenance. The natural properties of New Zealand wool makes it non-allergenic and fire-resistant which helps to create a safe and healthy indoor environment, and also it has a natural ability to resist dirt. New Zealand wool is made with animal friendly practices and it is sustainable, natural and biodegradable. New Zealand wool has long fibres and therefore peeling is minimized to almost nothing. In our opinion New Zealand wool has all the qualities to create the perfect rug. Underlay carpet is recommended. Suitable for domestic and contract use.

**Quality:** Handwoven  
100% New Zealand Wool

**Available Sizes:**

140 x 200 cm  
170 x 240 cm  
200 x 300 cm  
250 x 300 cm  
300 x 400 cm\*  
Wall-to-wall carpets

**Custom sizes:** Yes

**Pile height:** 10-11 mm

**Weight:** 4,0 kg/m<sup>2</sup>

**Size variation:** +/-3%

**Warranty:** 2 years

**Certifications:**

Colorfastness to light:

ISO 105-B02-grade 5

Flammability:

16CFR 1630 (FF-1-70)

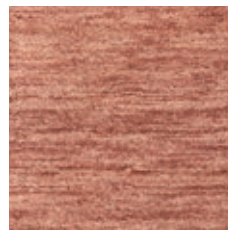
Production: SA 8000



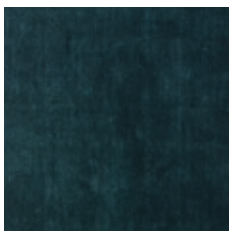
*cream*



*verte grey*



*cafe cream*



*sea green*



*charcoal*



*moss green*

\*only verte grey & charcoal







BAMBOO | grey

## BAMBOO

Massimo BAMBOO rugs are made of 100% bamboo fibres which gives a luxurious feeling due to the unique softness and shiny surface. Bamboo fibres are made of bamboo pulp and have strong durability, stability and tenacity. The quality of the fibres minimizes peeling to almost nothing. The production of Bamboo is sustainable as it thrives without any pesticides and also it is biodegradable and thus a very eco-friendly material. Underlay carpet is recommended. Suitable for domestic and contract use in areas with moderate traffic.

**Quality:** Handwoven  
100% Bamboo

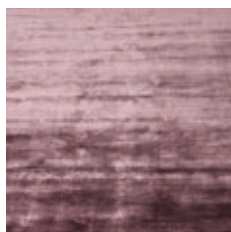
**Available sizes:**  
140 x 200 cm  
170 x 240 cm  
200 x 300 cm  
250 x 300 cm  
300 x 400 cm\*  
Dia. 240 cm (round)\*\*  
Wall-to-wall carpets  
**Custom sizes:** Yes

**Pile height:** 11-12 mm  
**Weight:** 4.00 kg/m<sup>2</sup>  
**Size variation:** +/-3%  
**Warranty:** 2 years

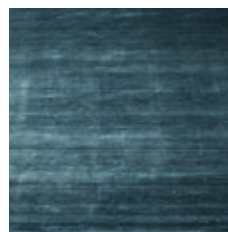
**Certifications:**  
Colorfastness to light:  
ISO 105-B02-grade 5  
Flammability:  
16CFR 1630 (FF-1-70)  
Production: SA 8000



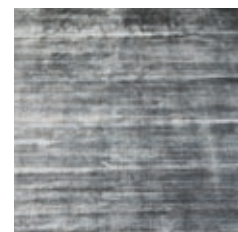
rose dust



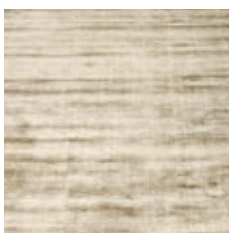
plum



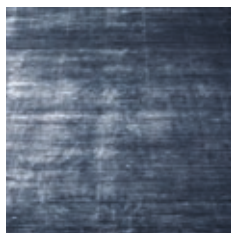
stiffkey blue



grey



light brown



steelblack



light grey

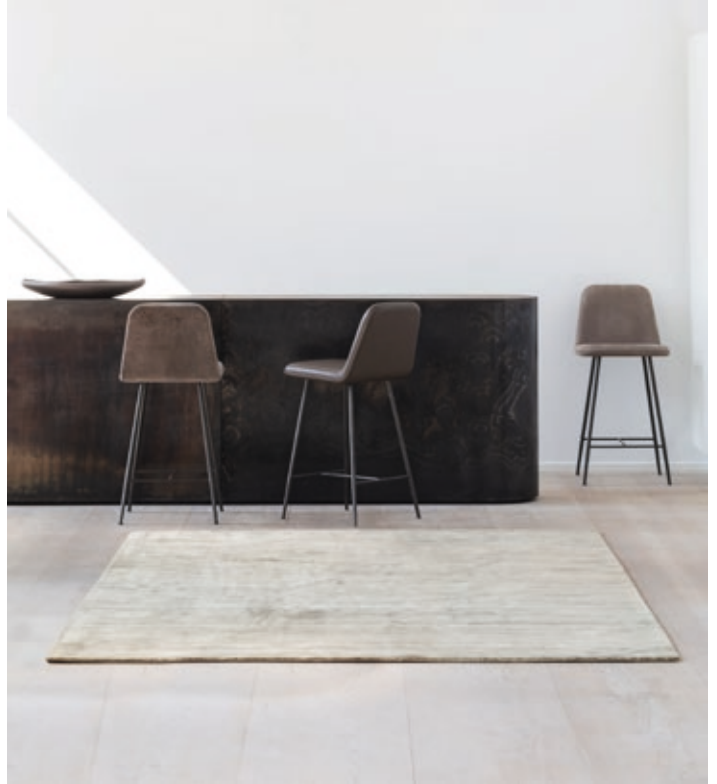


copper

\*only grey, light grey, steelblack and stiffkey blue

\*\*only grey and steelblack





KARMA | olive green

## KARMA

Massimo KARMA rug is made of recycled bamboo fibers which gives a durable rug with a light shine which is easy to maintain.

Bamboo fibers are made of bamboo pulp and have strong durability, stability and tenacity. The quality of the fibers minimizes peeling to almost nothing. The production of Bamboo is sustainable as it thrives without any pesticides and also it is biodegradable and thus a very eco-friendly material. Underlay carpet is recommended. Suitable for domestic and contract use.

### Quality:

Handwoven  
Recycled Bamboo

### Available Sizes:

160 x 230 cm  
200 x 300 cm  
250 x 350 cm

### Custom sizes: Yes

**Pile height:** 5-7 mm

**Weight:** 4.00 kg/m<sup>2</sup>

**Size variation:** +/-3%

**Warranty:** 2 years

### Certifications:

Colorfastness to light:

ISO 105-B02-grade

5 Flammability:

16CFR 1630 (FF-1-70)

Production: SA 8000



nougat



olive green



light grey



washed blue







MOON NIGHT

## MOON NIGHT

Moon Night is a high quality handknotted rug made of 100% bamboo fibres which gives a luxurious feeling due to the unique softness and shiny surface. Bamboo fibres are made of bamboo pulp and have strong durability, stability and tenacity. The quality of the fibres minimizes peeling to almost nothing. The production of Bamboo is sustainable as it thrives without any pesticides and also it is biodegradable and thus a very eco-friendly material. Underlay carpet is recommended. Suitable for domestic and contract use in areas with moderate traffic.



*moon night*

**Quality:** Handknotted  
100% Bamboo

**Available sizes:**  
Dia. 200 cm (round)  
Dia. 240 cm (round)  
170 x 240 cm  
200 x 300 cm

**Custom sizes:** Yes

**Pile height:** 11-12 mm  
**Weight:** 4,0 kg/m<sup>2</sup>  
**Size variation:** +/-3%  
**Warranty:** 2 years

**Certifications:**  
Colorfastness to light:  
ISO 105-B02-grade 5  
Flammability:  
16CFR 1630 (FF-1-70)  
Production: SA 8000









COPPER MOON

## COPPER MOON

Copper Moon is a high quality handknotted rug made of 100% bamboo fibres which gives a luxurious feeling due to the unique softness and shiny surface. Bamboo fibres are made of bamboo pulp and have strong durability, stability and tenacity. The quality of the fibres minimizes peeling to almost nothing. The production of Bamboo is sustainable as it thrives without any pesticides and also it is biodegradable and thus a very eco-friendly material. Underlay carpet is recommended. Suitable for domestic and contract use in areas with moderate traffic.



*copper moon*

**Quality:** Handknotted  
100% Bamboo

**Available sizes:**  
Dia. 200 cm (round)  
Dia. 240 cm (round)  
170 x 240 cm  
200 x 300 cm

**Custom sizes:** Yes

**Pile height:** 11-12 mm  
**Weight:** 4,0 kg/m<sup>2</sup>  
**Size variation:** +/-3%  
**Warranty:** 2 years

**Certifications:**  
Colorfastness to light:  
ISO 105-B02-grade 5  
Flammability:  
16CFR 1630 (FF-1-70)  
Production: SA 8000

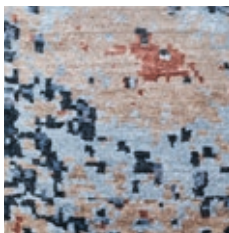




OCEAN

## OCEAN

Ocean is a high quality handknotted rug made of best quality New Zealand wool mixed with Bamboo fibres. The combination of New Zealand wool and Bamboo gives a very durable rug with a light shine which is easy to maintain. The quality of the fibres minimizes peeling to almost nothing. The production of Bamboo is sustainable as it thrives without any pesticides, New Zealand wool is made with animal friendly practices and both fibres are sustainable, natural and biodegradable and thus very eco-friendly materials. Underlay carpet is recommended. Suitable for domestic and contract use in areas with moderate traffic.



*ocean*

### Quality:

Handknotted  
50% Bamboo, 50%  
New Zealand Wool

### Available sizes:

Dia. 200 cm (round)  
Dia. 240 cm (round)  
170 x 240 cm  
200 x 300 cm

**Custom sizes:** Yes

**Pile height:** 10-11 mm

**Weight:** 3,75 kg/m<sup>2</sup>

**Size variation:** +/-3%

**Warranty:** 2 years

### Certifications:

Colorfastness to light:

ISO 105-B02—grade 5

Flammability:

16CFR 1630 (FF-1-70)

Production: SA 8000







SPACE SURFACE

## SPACE SURFACE

Space Surface is a high quality handknotted rug made of best quality New Zealand wool mixed with Bamboo fibres. The combination of New Zealand wool and Bamboo gives a very durable rug with a light shine which is easy to maintain. The quality of the fibres minimizes peeling to almost nothing. The production of Bamboo is sustainable as it thrives without any pesticides, New Zealand wool is made with animal friendly practices and both fibres are sustainable, natural and biodegradable and thus very eco-friendly materials. Underlay carpet is recommended. Suitable for domestic and contract use in areas with moderate traffic.



*space surface*

### **Quality:**

Handknotted  
50% Bamboo, 50%  
New Zealand Wool

### **Available sizes:**

Dia. 200 cm (round)  
Dia. 240 cm (round)  
170 x 240 cm  
200 x 300 cm

**Custom sizes:** Yes

**Pile height:** 10-11 mm

**Weight:** 3,75 kg/m<sup>2</sup>

**Size variation:** +/-3%

**Warranty:** 2 years

### **Certifications:**

Colorfastness to light:

ISO 105-B02—grade 5

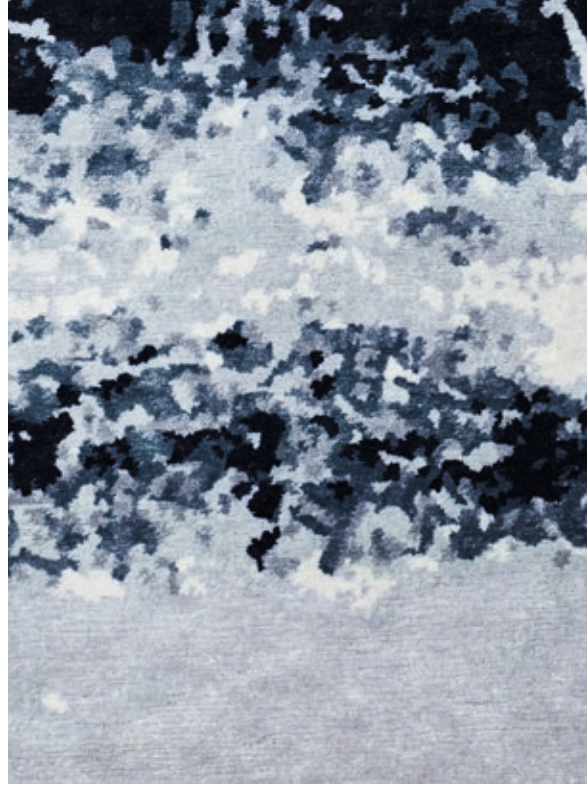
Flammability:

16CFR 1630 (FF-1-70)

Production: SA 8000



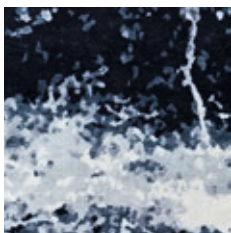




STARDUST

## STARDUST

Massimo stardust rug is made of best quality New Zealand wool mixed with Bamboo fibres. The combination of New Zealand wool and Bamboo gives a very durable rug with a light shine which is easy to maintain. The quality of the fibres minimizes peeling to almost nothing. The production of Bamboo is sustainable as it thrives without any pesticides, New Zealand wool is made with animal friendly practices and both fibres are sustainable, natural and biodegradable and thus very eco-friendly materials. Underlay carpet is recommended. Suitable for domestic and contract use.



blue

**Quality:** Handwoven  
50% New Zealand  
wool / 50% Bamboo

**Available sizes:**  
170 x 240 cm  
200 x 300 cm

**Custom sizes:** Yes

**Pile height:** 10-11 mm

**Weight:** 3,75 kg/m<sup>2</sup>

**Size variation:** +/-3%

**Warranty:** 2 years

**Certifications:**

Colorfastness to light:

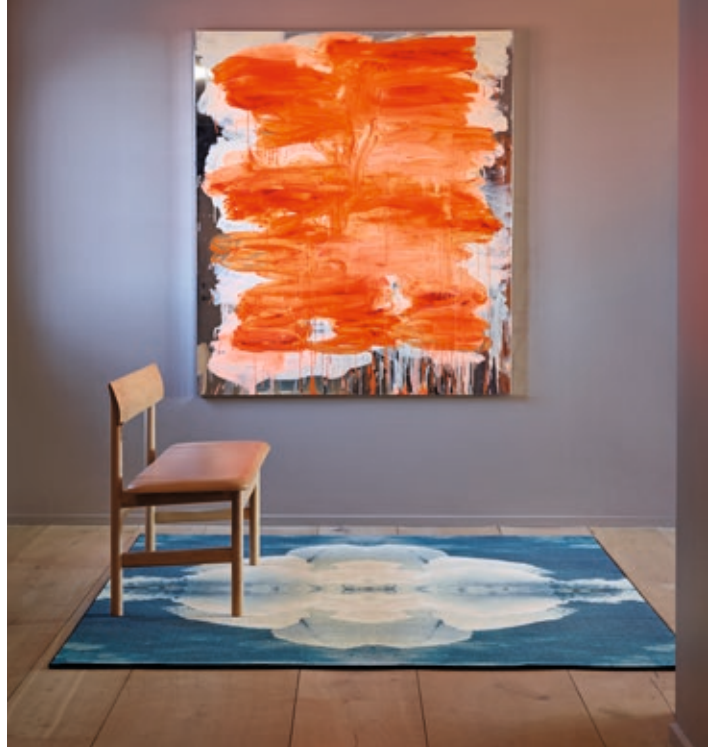
ISO 105-B02–grade 5

Flammability:

16CFR 1630 (FF-1-70)

Production: SA 8000





REFLECTIONS I IV

## REFLECTIONS

A collection of 3 high quality art print rugs designed by Henrik Dybdahl – printed on soft and velvety material which is extremely durable and easy to maintain.

Henrik Dybdahl describes himself as a heritage adventurer and visual artist. He digs into archives, libraries and museums all over the world looking for visual gold. The findings are digitally enhanced, remixed and made into new pieces often published as limited edition fine art prints and now also as rugs.

Suitable for domestic and contract use in areas with heavy traffic.

**Quality:** PA with chromojet print

**Available Sizes:**

160 x 240 cm  
200 x 300 cm  
240 x 320 cm

**Custom sizes:** No

**Pile height:** 0,6 cm

**Weight:** 2,8 kg/m<sup>2</sup>

**Flammability:**

EN13501-1

**Warranty:** 2 years



*Reflection VII*



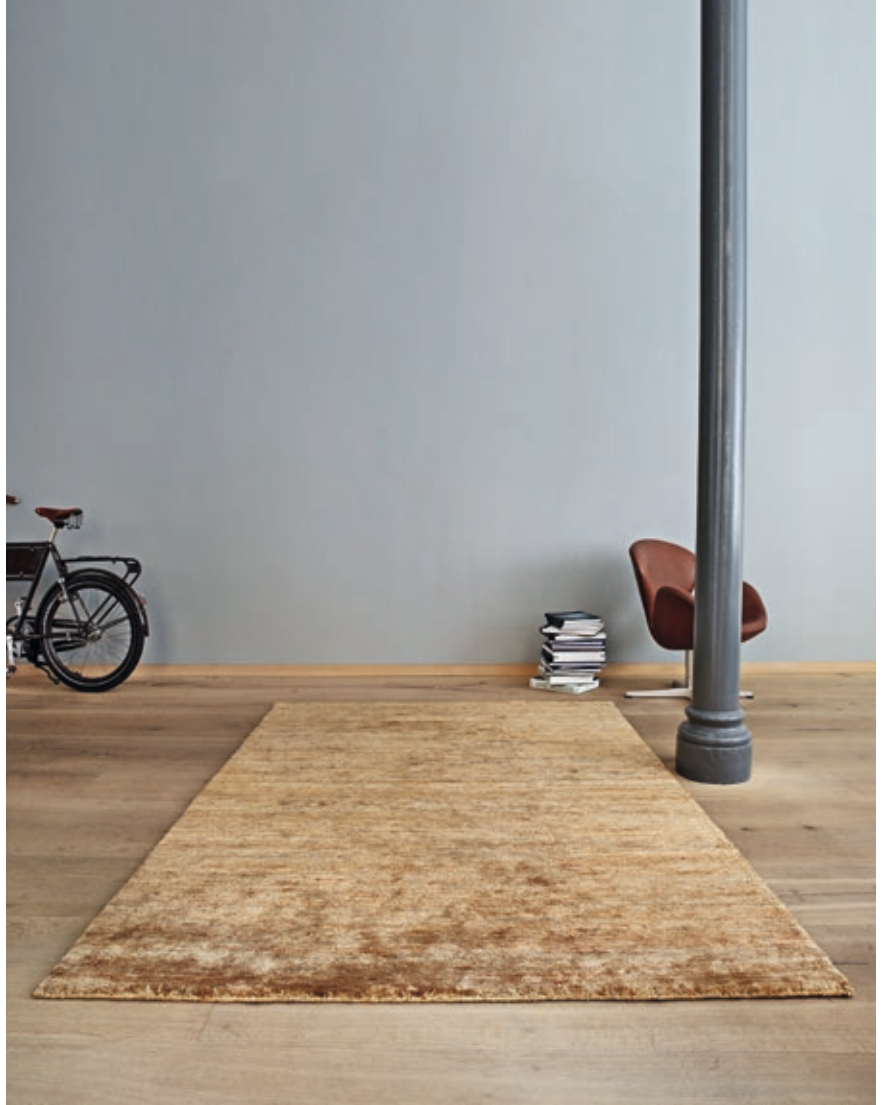
*Reflection IV*



*Reflection dark & green*







TRIBECA | *natural*

## TRIBECA

This natural handknotted rug is made of 100% hemp and is sustainable, natural and biodegradable, showing us what nature has to offer. The simple and rustic design appeals to the senses and makes it easy to fit into all environments. Underlay carpet is recommended. Suitable for domestic and contract use.

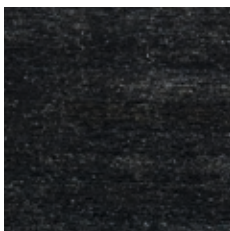
**Quality:** Handknotted  
100% hemp

**Available sizes:**  
140 x 200 cm\*  
170 x 240 cm  
200 x 300 cm

**Custom sizes:** Yes

**Pile height:** 11-12 mm  
**Weight:** 5,0–5,5 kg/m<sup>2</sup>  
**Size variation:** +/-3%  
**Warranty:** 2 years

**Certifications:**  
Colorfastness to light:  
ISO 105-B02–grade 5  
Flammability:  
16CFR 1630 (FF-1-70)  
Production: SA 8000



*black*



*natural*

\*only black







BUR-BUR | *black*

## BUR-BUR

Handknotted rug in natural Afghan wool. The high quality of the wool makes this rug very durable and ensures easy maintenance. Underlay carpet is included. Suitable for domestic and contract use in areas with moderate traffic.

**Quality:**  
Handknotted  
Afghan wool

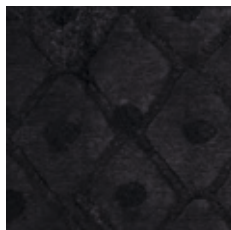
**Available sizes:**  
170 x 240 cm

**Custom sizes:** No

**Pile height:** 10 mm  
**Weight:** 3.00 kg/m<sup>2</sup>  
**Size variation:** +/-3%  
**Warranty:** 2 years



*naturel*



*black*





LEATHERrug | *black*

## LEATHERrug

The more you use it, the more patina it obtains – the more you will love this raw, industrial LEATHERrug! Throw it on the floor, walk on it, play on it, sleep on it – JUST USE IT!

Underlay carpet is included.

Suitable for domestic and contract use.

**Quality:** Handmade  
Buffalo leather

**Custom sizes:** Yes  
(only black & brown)

**Available sizes:**

80 x 240 cm (square tiles)

90 x 210 cm (rectangular tiles)

150 x 210 cm (rectangular tiles)

160 x 240 cm (square tiles)

180 x 240 cm (rectangular tiles)

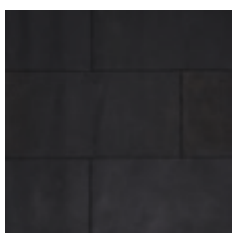
240 x 320 cm (square tiles)

**Pile height:** N/A

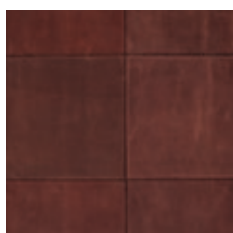
**Weight:** 2,5 kg/m<sup>2</sup>

**Size variation:** +/-3%

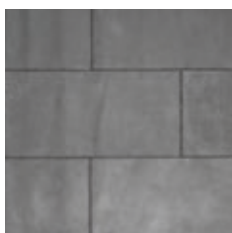
**Warranty:** 2 years



*black*



*brown*



*grey*



SUMACE | natural (with fringes)





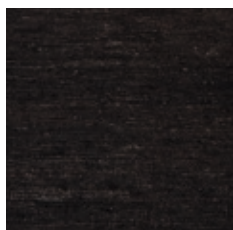
SUMACE | *black (without fringes)*

## SUMACE

Handknotted in 100% hemp which gives a sophisticated rustic expression and appeals to the basics in life. Hemp is sustainable, natural and biodegradable and has a strong durability. Available with or without fringes. Underlay carpet is included. Suitable for domestic and contract use.



*natural*



*black*

**Quality:** Handknotted  
100% Hemp

**Available sizes:**

80 x 200 cm  
170 x 240 cm  
200 x 300 cm  
250 x 300 cm

**Custom sizes:** Yes

**Pile height:** N/A

**Weight:** 3,5–3,7 kg/m<sup>2</sup>

**Size variation:** +/-3%

**Warranty:** 2 years

**Certifications:**

Colorfastness to light:

ISO 105-B02-grade 5

Flammability:

16CFR 1630 (FF-1-70)

Production: SA 8000



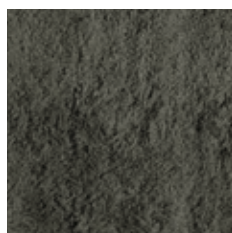
RYA | cream

## RYA

This high quality RYA rug is made of 100% New Zealand wool which adds natural beauty and ensures easy maintenance. The natural properties of New Zealand wool makes it non-allergenic and fire-resistant which helps to create a safe and healthy indoor environment, and also it has a natural ability to resist dirt. New Zealand wool is made with animal friendly practices and it is sustainable, natural and biodegradable. New Zealand wool has long fibres and therefore peeling is minimized. Underlay carpet is recommended. Suitable for domestic and contract use in areas with moderate traffic.



cream



charcoal

**Quality:** Handwoven  
100% New Zealand wool

**Available sizes:**  
140 x 200 cm  
170 x 240 cm  
200 x 300 cm\*

**Custom sizes:** Yes

**Pile height:** 45 mm  
**Weight:** 4,3 kg/m<sup>2</sup>  
**Size variation:** +/-3%  
**Warranty:** 2 years

**Certifications:**  
Colorfastness to light:  
ISO 105-B02-grade  
5 Flammability:  
16CFR 1630 (FF-1-70)  
Production: SA 8000

\*Only cream





## BUBBLES

The soft graphic expression of this rug adds a cool nordic ambience to your home. The felted wool is easy to maintain – the natural properties of New Zealand wool makes it non-allergenic and fire-resistant which helps to create a safe and healthy indoor environment, and it has a natural ability to resist dirt. New Zealand wool is made with animal friendly practices and it is sustainable, natural and biodegradable. New Zealand wool has long fibres and therefore peeling is minimized to almost nothing. Underlay carpet is recommended. Suitable for domestic and contract use in areas with moderate traffic.

**Quality:** Handwoven  
Felted New Zealand  
wool

**Available sizes:**  
140 x 200 cm\*\*  
170 x 240 cm\*  
200 x 300 cm\*

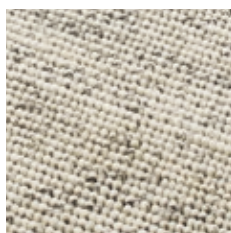
**Custom sizes:**  
Yes (except for round)

**Pile height:** 15 mm  
**Weight:** 6,3 kg/m<sup>2</sup>  
**Size variation:** +/-3%  
**Warranty:** 2 years

**Certifications:**  
Colorfastness to light:  
ISO 105-B02-grade 5  
Flammability:  
16CFR 1630 (FF-1-70)  
Production: SA 8000



cream



mixed grey

\*\*only cream

\*only mixed grey







## TRASH RocknRoll

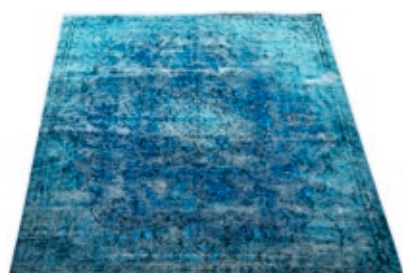
Unique rugs transformed from traditional centuries old handknotted rugs. We wash them, some we use as they are, some we trash, some we color and some we bleach. We strive to obtain that expression of decadent decay which adds so much class to all kind of environments. The rugs are easy to maintain and the more you use them the more character they get. If you have any specific requirements, please let us know and we will try to find just that special rug for you. Underlay carpet is recommended. Suitable for domestic and contract use.

**Quality:** Unique handknotted rugs, transformed by massimo

**Pile height:** N/A  
**Weight:** 3,8 kg/m<sup>2</sup>  
**Size variation:** +/- 3%  
**Warranty:** 2 years

**Available sizes:**  
 All rugs are unique, ask for stock list to see available sizes

Examples of TRASH RocknRoll rugs  
 (ask for stock list to see all available rugs):









NATURAL kelims | LIGHT grey

## NATURAL kelims

Handwoven traditional kelims in high quality Afghan wool. Each rug is unique and the combination of traditional weaving methods and patterns together with the natural colored wool provides unique rugs with high integrity.

The natural properties of wool makes it non-allergenic and fire-resistant which helps to create a safe and healthy indoor environment. It has a natural ability to resist dirt and is sustainable, natural and biodegradable.

Underlay carpet is included.  
Suitable for domestic and contract use in areas with moderate traffic.

### Quality:

Handwoven  
Afghan wool

### Available sizes:

150 x 200 cm\*  
170 x 240 cm  
200 x 300 cm  
250 x 300 cm\*\*

### Custom sizes:

Custom sizes available  
on stock – please ask for  
stock list

**Pile height:** N/A

**Weight:** 2,5 kg/m2

**Size variation:** +/- 3%

**Warranty:** 2 years



LIGHT  
grey



DARK  
grey/brown/black



BLACK

\*only LIGHT grey & DARK grey/brown/black

\*\*only LIGHT grey



VINTAGE | *naturel light*

## VINTAGE

Unique rugs made of semi-old Anatolian handknotted rugs which are transferred into beautiful patchwork rugs by massimo. Choose your color combination and we guarantee that you will get the most beautiful unique handmade rug with a long lasting value which is easy to maintain. Underlay carpet is recommended. Suitable for domestic and contract use.

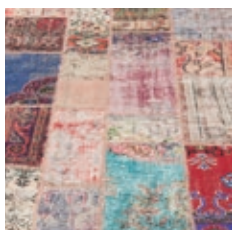
**Quality:** Unique semi-old Anatolian handknotted rugs transferred into pathwork rugs

**Available sizes:**

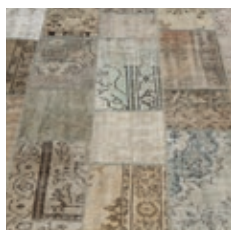
140 x 200 cm  
170 x 240 cm  
200 x 300 cm

**Custom sizes:** Yes

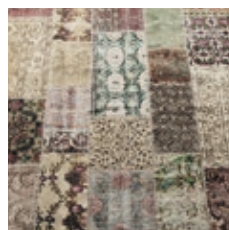
**Pile height:** N/A  
**Weight:** 3,8 kg/m<sup>2</sup>  
**Size variation:** +/- 3%  
**Warranty:** 2 years



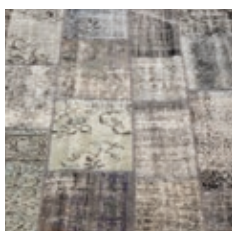
*natural strong*



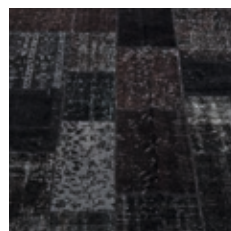
*antique*



*natural light*



*grey*



*black*

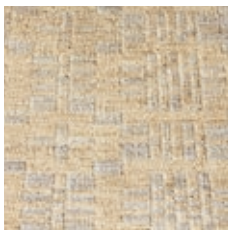




FRISS | *salmon*

## FRISS

The pattern that Karen Mimi's mother started but never finished – her name was Friis, but somehow it ended up as FRISS in our Massimo collection. She embroidered it on a pillow with fine cross stitch – we are handknitting this decayed needlework fragment in 100% hemp, which is sustainable, natural, biodegradable and has a strong durability. Designed by Karen Mimi. Underlay carpet is recommended. Suitable for domestic and contract use.



*salmon*

**Quality:**  
Handknotted hemp

**Available sizes:**  
80 x 240 cm\*  
140 x 200 cm\*  
170 x 240 cm

**Custom sizes:** No

**Pile height:** N/A  
**Weight:** 2,5 kg/m<sup>2</sup>  
**Size variation:** +/-3%  
**Warranty:** 2 years

**Certifications:**  
Colorfastness to light:  
ISO 105-B02-grade 5  
Flammability:  
16CFR 1630 (FF-1-70)  
Production: SA 8000

\*only salmon



GARDEN | brown/burgundy

## GARDEN

A garden with flowers – handknotted in natural Afghan wool. The high quality of the wool makes this rug very durable and ensures easy maintenance. Underlay carpet is recommended. Suitable for domestic and contract use in areas with moderate traffic.

**Quality:** Handknotted  
Afghan wool

**Available sizes:**  
160 x 230 cm

**Custom sizes:** No

**Pile height:** 10 mm  
**Weight:** 3.00 kg/m<sup>2</sup>  
**Size variation:** +/-3%  
**Warranty:** 2 years



grey/blue



brown/burgundy



BELIZE | *taupe*

## BELIZE

Natural rug in 100% Sisal with rubber backing. Belize is made in a simple design, yet with a lot of character. Sisal is sustainable, natural and biodegradable and has a strong durability. With rubber backing. Suitable for domestic and contract use.

**Quality:** Machine made with rubber backing.  
100% Sisal

**Available sizes:**  
160 x 240 cm  
240 x 320 cm

**Custom sizes:** No

**Pile height:** N/A  
**Weight:** 3,5–3,7 kg/m<sup>2</sup>  
**Size variation:** +/-3%  
**Warranty:** 2 years



*taupe*



Photography: Andreas Mikkelsen and Lars Svankjær  
Styling: Marina R. Lykkesteen, Indretnu

## SALES ALL COUNTRIES

Chim Scavenius Sonne-Schmidt  
T: +45 4842 2573  
M: +45 6169 8169  
[chim@massimo.dk](mailto:chim@massimo.dk)



## massimocopenhagen AGENTS:

### NORWAY

Novelties  
Christian Myklebust  
T: +47 9134 9025  
christian@novelties.no

### SWEDEN

Mosaïque office  
mosaïque@mosaïque.dk  
T: +45 6611 4746

Helena Lindberg  
T: +46 708 455007  
helena@mosaïque.dk

### THE NETHERLANDS

Design Tales Agencies  
Veembroederhof 85 1019 HD  
Amsterdam The Netherlands  
T: +31 (0) 627 658 945  
pascal@designtales.nl

### GERMANY

Möbel & Licht Agentur  
Jürgen Evertz  
Antweiler Strasse 9  
53881 Euskirchen  
T: +49 (0)172 6814432  
Juergen.evertz@gmx.info

### LUXEMBURG

Swytch  
Peter Gallet  
T: +32 495 111 276  
peter@swytch.be

### RUSSIA

EMPIRE DESIGN  
Olga Farshatova  
T: +7 965 267 22 44  
T: +7 905 763 15 23  
T: +7 495 916 20 18  
empire-design@hotmail.com

### FRANCE

Le Studio des Collections  
Gérard Thomas  
T: +33 1 48 06 52 86  
gt@studiodescollections.com

### ITALY

NORDIC TRENDS  
Martin Bay  
T: +39 055 527 0329  
T: +39 393 952 0579  
martin.bay@nordictrends.com

### SPAIN

ORIGINAL MOBILIARIO, S.L.  
Renata H Agbewode  
C/ SICILIA, 129-131 2º3ª  
08013 BARCELONA  
T: 93 2466702  
ragbewode@originalmobiliario.com

### PORTUGAL

Isabela Nunes Brands  
Isabela Nunes  
Rua Conde de Nova Gôa, Lote  
9 – 2º Esq.  
1070-071 Lisbon  
T: (+351) 912 847 789  
isabelanunes.brands@gmail.com

### BELGIUM

Swytch  
Peter Gallet  
T: +32 495 111 276  
peter@swytch.be

### SWITZERLAND

International Trading Agency  
Dirk Euler  
Wydlerstrasse 21  
8802 Kilchberg ZH  
T: + 41(0)76 426 2014  
itadirkeuler@gmail.com

### JAPAN

MESATEX JAPAN INC  
Junichi Urabe  
T: +81-3-6277-2411  
urabe@mesatex.co.jp

### THAILAND

NORSE REPUBLICS  
The Republic  
14/1 Soi Somkid Ploenchit Rd.  
Pathumwan  
Bangkok 10330  
T: +66-95-641-5363  
contact@norserepublics.com



# massimo

copenhagen

**Head Office**

Store Kongensgade 110H  
1264 Copenhagen K  
Denmark

T: +45 4842 2573

E-mail: [info@massimo.dk](mailto:info@massimo.dk)  
[www.massimo.dk](http://www.massimo.dk)