

# tala<sup>®</sup>



CATALOGUE - UK/EU

AW18/19

**Tala Studios**  
25b Vyner Street  
London, E2 9DG  
T: +44 (0) 20 3026 3246  
E: [hello@tala.co.uk](mailto:hello@tala.co.uk)  
[www.tala.co.uk](http://www.tala.co.uk)

**Instagram** @tala  
**Twitter** @wordoftala  
**Facebook** @talaHQ

Tala is a registered trademark.  
All product descriptions in this Tala brochure are intended as a general guide to our range. As such, our specifications are subject to alteration as we develop and do not form any part of a contract. Tala accepts no liability for issues arising from a reliance of guide data to the extent permitted by law.

VAT Number: 182754681



— Voronoi I in Brass pendants

## ABOUT



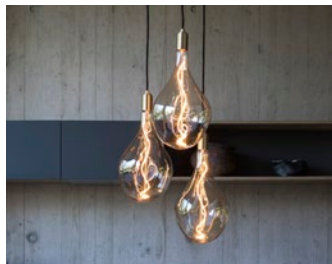
- 04 - Our Story
- 06 - Conservation Through Beauty
- 08 - Our Impact So Far
- 10 - Our Manufacturing
- 11 - Our Components
- 12 - Retail
- 14 - Projects
- 16 - Partnerships

## BASALT RANGE



- 18 - Introduction
- 20 - Basalt Ceiling Light

## VORONOI RANGE



- 24 - Introduction
- 26 - Voronoi III Ceiling Light
- 28 - Voronoi II Ceiling Light
- 30 - Voronoi I Ceiling Light
- 32 - Voronoi I Touch Lamp

## PORCELAIN RANGE



- 34 - Introduction
- 36 - Enno Ceiling Light
- 38 - Noma Ceiling Light
- 40 - Oblo Ceiling Light
- 42 - Oval Ceiling Light
- 44 - Enno, Oblo & Oval Touch lamps

## FEATURE COLLECTION



- 46 - Introduction
- 48 - Porcelain I, II & III
- 50 - Gaia, Elva & Squirrel Cage
- 42 - Totem I & III

## CLASSIC COLLECTION



- 54 - Introduction
- 56 - Globe, Crown, Lurra & Candle
- 58 - Pluto & Pygmy

## FIXTURES



- 60 - Introduction
- 62 - Oak & Walnut Pendants
- 64 - Oak & Walnut Touch Lamps
- 66 - Brass & Graphite Pendants
- 68 - Voronoi & Linear Ceiling Plate

## RESOURCES



- 70 - Compatible Dimmers
- 72 - Where To Find Tala
- 74 - Contacts



Co-founders from left to right: William Symington, Max Wood, Joshua Ward

## OUR STORY

Tala is an award-winning lighting brand, founded on the premise that good design can help mitigate climate change. From our London-based studio, we explore the tension between sustainability, technology and design through our wide-ranging collections.

### *A seamless switch.*

Our in-house research and development team and engineering lab combine the best of British design with superior componentry. On average, a Tala LED lamp uses 90% less energy than a traditional incandescent lamp, and it won't need replacing for 10-15 years.

### *Every idea starts with a seed.*

We donate a percentage of our revenue to reforestation programmes in the UK, the US and around the world. By choosing Tala, you are helping to restore a healthy planet for future generations.

### *Built to last.*

From the functional to the decorative, our LED lamps and accompanying fixtures illuminate interiors around the world. Our full range can be found at some of the finest showrooms and boutiques around the world. And with the team now counting over 50 passionate people in London and New York, the future is bright.



## CONSERVATION THROUGH BEAUTY

Energy-efficient hardware is just the start of our mission to help mitigate climate change. Our founding promise, Conservation Through Beauty, reminds us to take our responsibility as a manufacturer seriously. To constantly improve our practices, lower our environmental footprint, and restore natural ecosystems.

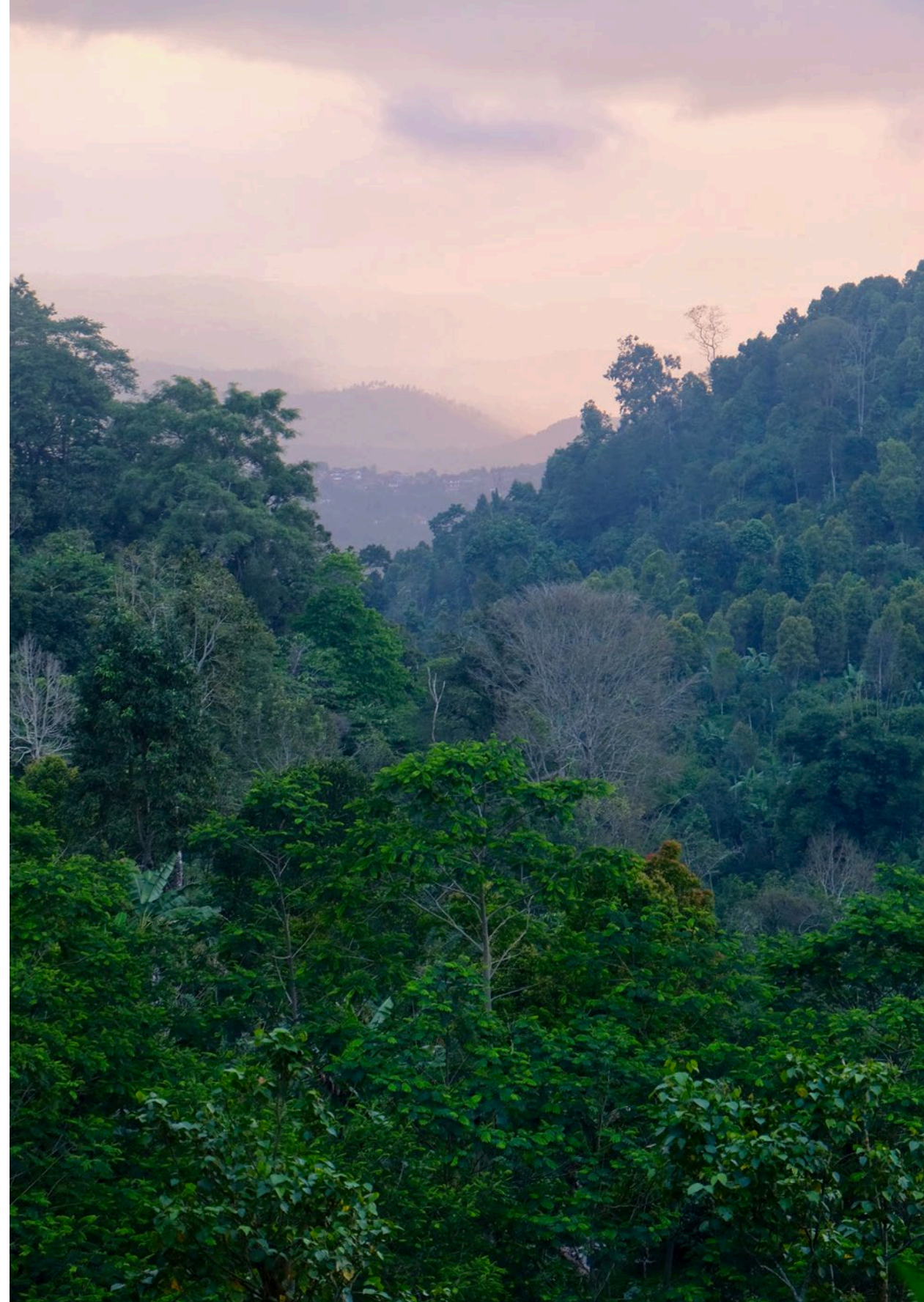
Reforestation helps us reduce carbon emissions and increase our impact. That is why we donate a percentage of our revenue to reforestation programmes in the UK, the US and around the world. By choosing Tala, you are helping to restore a healthy planet for future generations.

Our partners include:

*The Heart of England Forest*

*National Forest Foundation*

*WeForest*







Oval in Oak pendant and Touch Lamp

09  
ABOUT

## OUR IMPACT SO FAR

*40,029*

trees planted

*327,945,797*

kWh of electricity saved

*450,667*

incandescent lamps replaced

*123,501*

tonnes of carbon emissions prevented

### Based on the following assumptions:

\*Each Tala lamp sold is replacing an equivalent lumen output incandescent light

\*Electricity prices - £0.15 per kWh (UK); \$0.12 per kWh (US)

\*CO<sub>2</sub>e emissions factors - 0.28307 kg CO<sub>2</sub>/kWh (UK); 1.222 lbs CO<sub>2</sub>e/kWh (US)

\*Lights are switched on for 12 hrs a day, 7 days a week, 52 weeks a year

## OUR MANUFACTURING

We combine pioneering technology with traditional manufacturing processes, adhering to the highest production standards. The way we make our lamps is central to our commitment to sustainability.

Tala holds the Lighting Industry Association Quality Assurance (LIAQA) accreditation, which recognises product safety and compliance in the UK. Many of our products are CE, UL and ROHS certified. This means they are safe to use and do not contain any harmful substances, including mercury. We also have a no questions-asked warranty on all products to cover any anomalies or breakages.



Glass blanks before being mouth blown

## OUR COMPONENTS



**Glass:** Carefully chosen for maximum transparency and minimal scratching, and tinted by our own artisans.

**Drivers:** Our custom technology allows our lamps to be dimmed down to 5% with trailing and leading-edge dimming systems.

**Sapphire substrate:** Our straight filament designs contain sapphire substrate which allows greater heat dissipation and transparency than the market standard, resulting in a longer lasting and more even dispersion of light.

**Phosphor coating:** We have carefully selected the phosphor coating so that it is tuned to the exact colour temperature and CRI we specify.

**Inspection:** Each lamp is stress-tested on our maturation racks for a minimum of 3 hours.

**Shipping:** Our international logistics partner ensures orders are fulfilled quickly and reliably across the globe.





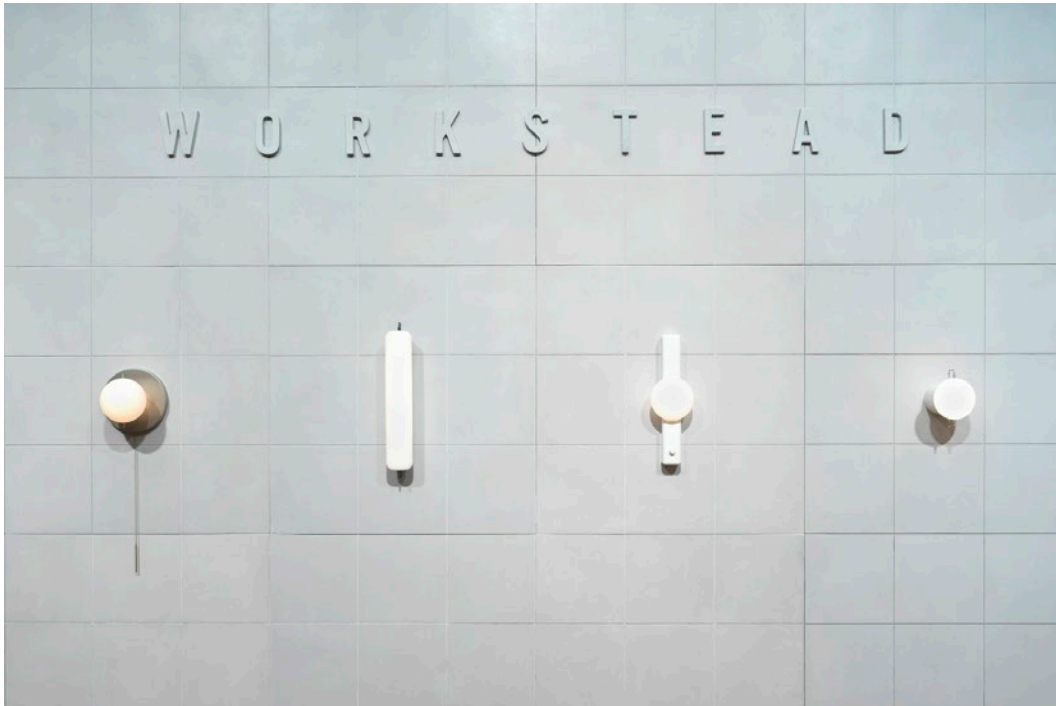
Above: La Rinascente, Milan  
Right: Heal's, London







Above: Voronoi I and II in Brass pendants at Hunan Slurp, New York City. Photo by Montse Zamorano  
Left: Porcelain II for Workstead at Material Interiors by Radnor, The Bryant, New York City. Photo by Matthew Williams



Above: Porcelain II for Workstead at ICFE, New York. Photo by Chris Mottalini  
Right: Detail of Liminal Collection by Lindsey Adelman. Photo by Lauren Coleman





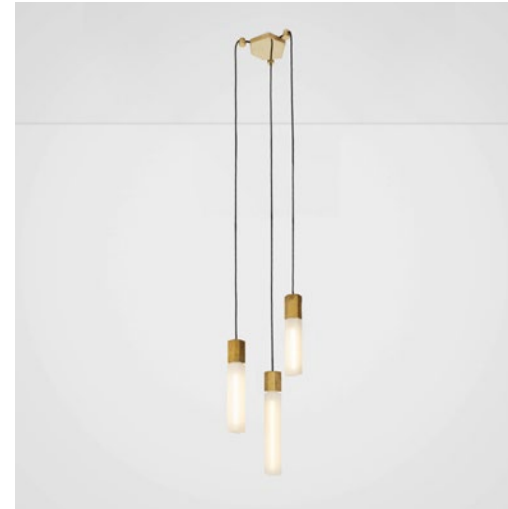
## BASALT

Inspired by the thousands of extruded basalt columns that make up the Giant's Causeway, Basalt unites sandcast solid brass and mouth-blown glass to evoke nature's magnitude. The distinctive irregular hexagonal pattern is reimagined for the modern interior, seamlessly combining robust materials with low, ambient lighting that can be dimmed to enhance the mood of a space.





## BASALT CEILING LIGHT



### LAMPS

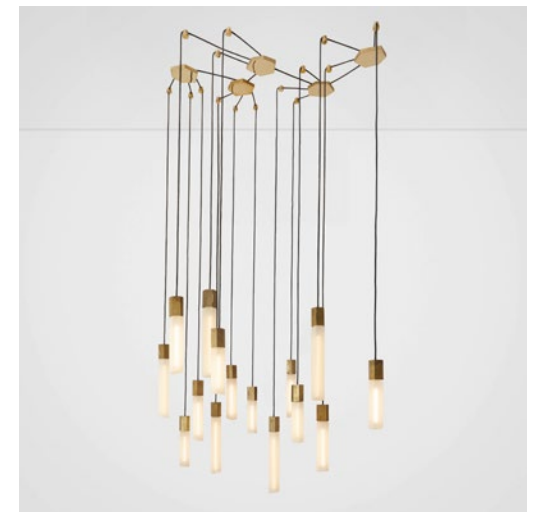
240V	CRI > 95	Lamp I 5.3W, 340 Lumens
E27 Base	Matte	Lamp II 6.5W, 420 Lumens
3000K		Lamp III 8.5W, 550 Lumens

### PENDANTS

Pendant I 55 x 74mm	Max wattage 60W
Pendant II 56 x 75mm	Luminaire Class II
Pendant III 58 x 74mm	

### CEILING ROSE

Ceiling Rose 80 x 25mm  
Black anti-kink cord 4.5m



Available in small, medium and large sizes.  
Please enquire for custom configurations.



## VORONOI

The organic forms in this collection stem from the voronoi pattern found in the forest canopy and throughout nature. We created a 3D model of the pattern and smoothed its edges to simulate natural erosion over time. Our designers then introduced the singular spiral of LED filament to mimic the Fibonacci sequence seen in pine cones and ferns. The result is a unique collection of statement mouth blown lamps, carved by nature.



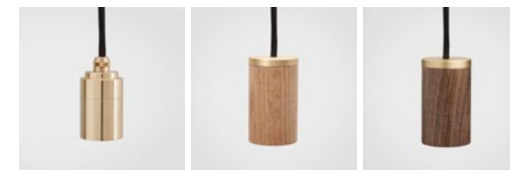
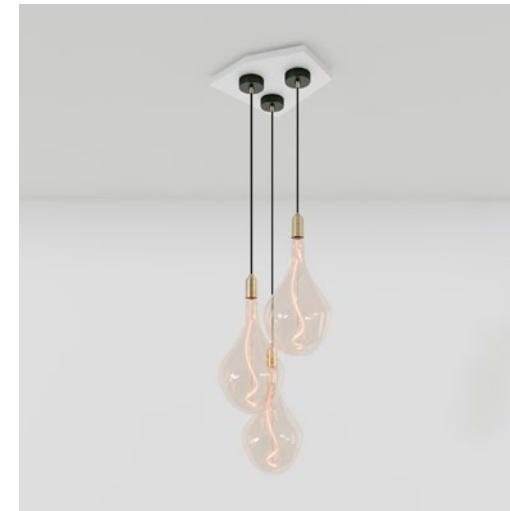
Forestry Research Institute, Malaysia  
Source: Mike Norton



Voronoi III Brass Ceiling Light



## VORONOI III CEILING LIGHT



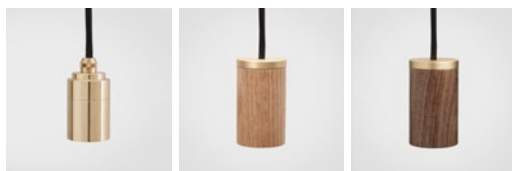
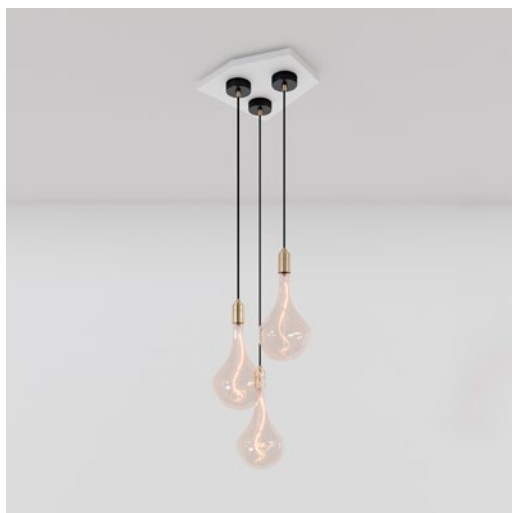
### SINGLE LAMP

5W	220 Lumens	E27 Base
2200K	240V	CRI > 95

Available in small, medium and large sets with lamps, pendants and ceiling plates, or sold in parts. Pendant options shown above. Please enquire for custom configurations.



## VORONOI II CEILING LIGHT



### SINGLE LAMP

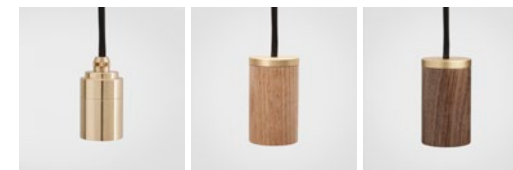
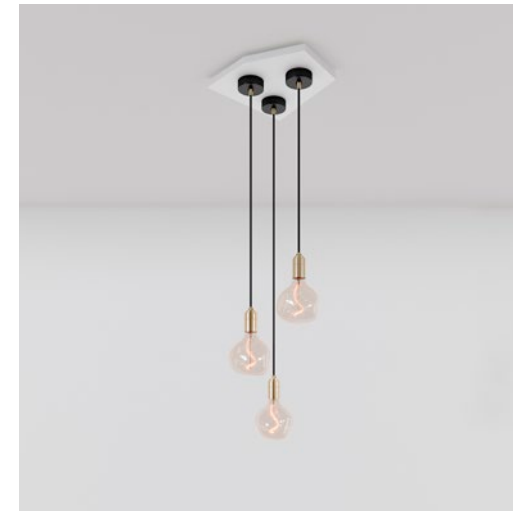
3W	120 Lumens	E27 Base
2200K	240V	CRI > 95

Available in small, medium and large sets with lamps, pendants and ceiling plates, or sold in parts. Pendant options shown above. Please enquire for custom configurations.



Voronoi II Brass Ceiling Light

## VORONOI I CEILING LIGHT



### SINGLE LAMP

2W	80 Lumens	E27 Base
2200K	240V	CRI > 95

Available in small, medium and large sets with lamps, pendants and ceiling plates, or sold in parts. Pendant options shown above. Please enquire for custom configurations.





VORONOI I TOUCH LAMP



Available in set with a lamp and touch lamp, or sold in parts. Three step dimming at base. Touch lamp options shown above.



Voronoi I in Oak Touch Lamp

## PORCELAIN

The Porcelain range is centred around four distinctive shapes that were squashed and moulded from matte glass before being individually mouth-blown. The light billows out from the centre of these unique and characterful lamps to create an atmosphere of serene harmony in any space. Designed to provide an antidote to an overly industrial aesthetic, these units work well with bold colours and backgrounds, breaking up space and colour with calm orbs of white light.



Oblo in Graphite pendants, Private residence, London



## ENNO CEILING LIGHT



### SINGLE LAMP

6W	240V	CRI > 95
2700K	E27 Base	Matte White
540 Lumens		

Available in sets with lamps, pendants and ceiling plates, or sold in parts. Pendant options shown above.

## NOMA CEILING LIGHT



### SINGLE LAMP

6W	240V	CRI > 95
2700K	E27 Base	Matte White
540 Lumens		

Available in sets with lamps, pendants and ceiling plates, or sold in parts. Pendant options shown above.



Noma in Oak pendant





Oblo Graphite Ceiling Light

## OBLO CEILING LIGHT



### SINGLE LAMP

6W

240V

CRI > 95

2700K

E27 Base

Matte White

540 Lumens

Available in sets with lamps, pendants and ceiling plates, or sold in parts. Pendant options shown above.

## OVAL CEILING LIGHT



### SINGLE LAMP

6W	240V	CRI > 95
2700K	E27 Base	Matte White
540 Lumens		

Available in sets with lamps, pendants and ceiling plates, or sold in parts. Pendant options shown above.



Oval in Walnut pendants and Touch Lamp



## ENNO TOUCH LAMP



Available in set with a lamp and touch lamp, or sold in parts. Three step dimming at base. Touch lamp options shown above.

## OBLO TOUCH LAMP



Available in set with a lamp and touch lamp, or sold in parts. Three step dimming at base. Touch lamp options shown above.

## OVAL TOUCH LAMP



Available in set with a lamp and touch lamp, or sold in parts. Three step dimming at base. Touch lamp options shown above.

## FEATURE COLLECTION

With a warm, amber glow and playful forms, these exposed lights lend a touch of statement style to any interior. Equally at home suspended from the ceiling, or 'upside-down' in a Touch Lamp.



Gaia in Brass pendant



## PORCELAIN I



3W      240V      CRI > 95  
 2700K      E14 Base      Matte White  
 240 Lumens

Fixture options: All E14 fixtures

## PORCELAIN II



6W      240V      CRI > 95  
 2700K      E27 Base      Matte White  
 540 Lumens

Available in sets with lamps, pendants and ceiling plates, or sold in parts.

## PORCELAIN III



6W      240V      CRI > 95  
 2700K      E27 Base      Matte White  
 540 Lumens

Available in sets with lamps, pendants and ceiling plates, or sold in parts.

## PORCELAIN III TOUCH LAMP



Available in set with a lamp and touch lamp, or sold in parts. Three step dimming at base. Touch lamp options shown above.

## GAIA



6W      240V      CRI > 95  
 2200K      E27 Base      Tinted  
 480 Lumens

Available in sets with lamps, pendants and ceiling plates, or sold in parts.

## GAIA TOUCH LAMP



Available in set with a lamp and touch lamp, or sold in parts. Three step dimming at base. Touch lamp options shown above.

## ELVA



6W      240V      CRI > 95  
 2200K      E27 Base      Clear/Tinted  
 480 Lumens

Available in sets with lamps, pendants and ceiling plates, or sold in parts.

## SQUIRREL CAGE

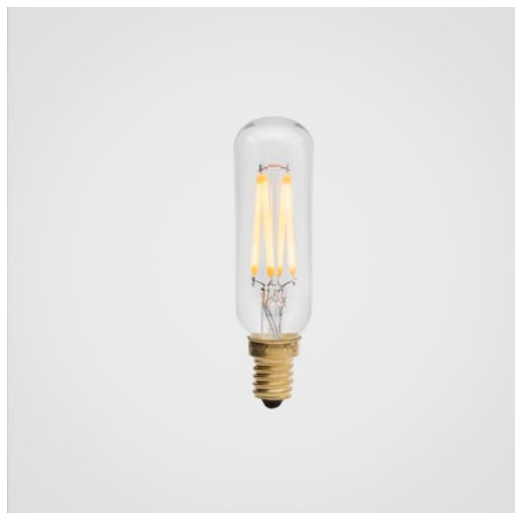


3W      240V      CRI > 95  
 2200K      E27 Base      Tinted  
 240 Lumens

Available in sets with lamps, pendants and ceiling plates, or sold in parts.



## TOTEM I



3W      240V      CRI > 95  
2200K      E14 Base      Tinted  
240 Lumens

Fixture options: All E14 lamps

## TOTEM III



4W      240V      CRI > 95  
2200K      E27 Base      Tinted  
320 Lumens

Available in sets with lamps, pendants and ceiling plates or sold in parts.



Totem III in Brass pendant

## CLASSIC COLLECTION

This versatile collection of functional lamps is designed to retrofit most standard fittings and fixtures. Built from superior components, the result is an unparalleled performance and long-lasting quality.





GLOBE



6W  
2500K  
480 Lumens

240V  
E27 Base

CRI > 95  
Clear

CROWN



3W  
2500K  
300 Lumens

240V  
E27 Base

CRI > 95  
Clear

LURRA



3W  
2200K  
240 Lumens

240V  
E27 Base

CRI > 95  
Tinted

CANDLE



4W  
2500K  
320 Lumens

240V  
E14 Base

CRI > 95  
Clear

PLUTO



3W  
2200/ 2500K  
240 Lumens

240V  
E14 Base

CRI > 95  
Tinted/Clear

PYGMY



2W  
2200K  
130 Lumens

240V  
E14 Base

CRI > 95  
Tinted





## FIXTURES

Built from materials known for their durable and malleable characteristics, our fixtures are designed to complement our range of lamps. From FSC-grade pure American oak and walnut to brass, we work with the finest natural resources available.

A true celebration of material properties, our fixtures are simple in spirit and versatile in nature. All come with a 3-metre black threaded cord made from a silicone that's designed to minimise kinks.



Gaia in Brass pendant and Walnut Touch Lamp

### OAK KNUCKLE PENDANT



240V  
Max Wattage 60W    Pendant 40 x 65mm  
Luminaire Class II    Ceiling Rose 80 x 25mm

Available in sets with lamps, pendants and ceiling plates, or sold in parts.

### WALNUT KNUCKLE PENDANT



240V  
Max Wattage 60W    Pendant 40 x 65mm  
Luminaire Class II    Ceiling Rose 80 x 25mm

Available in sets with lamps, pendants and ceiling plates, or sold in parts.



Noma in Oak pendants





Oval in Oak Touch Lamp

## OAK TOUCH LAMP



240V  
Max Wattage 20W  
Luminaire Class II

3-Step dimming  
85 x 135mm

Available in sets with select lamps, or sold in parts.

## WALNUT TOUCH LAMP



240V  
Max Wattage 20W  
Luminaire Class II

3-Step dimming  
85 x 135mm

Available in sets with select lamps, or sold in parts.

## BRASS PENDANT



240V  
Max Wattage 60W  
Luminaire Class II  
Pendant 40 x 65mm  
Ceiling Rose 80 x 25mm

Available in sets with lamps, pendants and ceiling plates, or sold in parts.

## GRAPHITE PENDANT



240V  
Max Wattage 60W  
Luminaire Class II  
Pendant 40 x 65mm  
Ceiling Rose 80 x 25mm

Available in sets with Porcelain range lamps, pendants and ceiling plates, or sold in parts.



Enno in Graphite pendant, Private Residence, London



## VORONOI CEILING PLATE

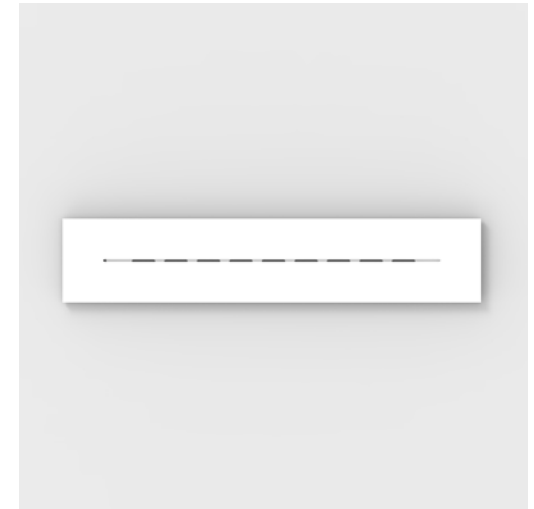


1mm thick sheet steel    350 x 334 x 30mm  
Folded & welded edges    White powder coating

Conceived as a modular system, this elegant ceiling plate houses clusters of Voronoi lamps in groups of three. Its geometric shape is designed to tessellate in a variety of arrangements, mimicking the forest canopy inspiration behind the range.

Available in sets with Voronoi range lamps and pendants.

## LINEAR CEILING PLATE



1mm thick sheet steel    900 x 180 x 20mm  
Folded & welded edges    White powder coating

A simple, hard-wearing solution that makes it easier than ever to hang four pendants in a uniform row. Each cable is securely hooked into position, ensuring consistent spacing between each light.

Available in sets with Porcelain range and Feature collection lamps and pendants, or sold in parts.

## COMPATIBLE DIMMERS

We've tested the most widely used dimmers on the market to guarantee the best possible performance with our lamps. The dimmers below have proven themselves time and time again for their quality, compatibility and uniformity. For best results, use only one type of Tala lamp per dimmer and do not mix different lamp brands.

### RECOMMENDED

#### 240V

**Varilight - V-pro JXP401**  
(X denotes faceplate color)

#### 140V

**Lutron - Diva DVELV-300P-XX**  
(X denotes faceplate color)

### COMPATIBLE

#### 240V

Hamilton - LEDIT-B100  
Hamilton - H-LED-STAT  
EPV - Dimmtronic PAB 315  
EPV - Dimmtronic M1000/3.3  
Zano - ZBAR  
Eltako - EUD12NPN-UC  
Eltako - EUD61NPN-UC  
Mode - Tiger  
Tecnal - TE44895N  
Tecnal - TE7636  
Niko - 310-0190x  
Busch-Jaeger - 6526U  
Busch-Jaeger - 6523U-102  
Dmax by Domintell - 520S  
Dmax by Domintell - 420SL  
Dmax by Domintell - 420BLE  
Gira - System2000  
Lumex - LT1D450LSWE  
LE Controls - 6TEP400  
LE Controls - 6TEP200  
Rako - RAK-4T  
Vadsbo - VD200/300  
Vadsbo - LD200/220

#### 120V

Lutron - DVCL-153P Diva C.L  
Lutron - LECL-153PH-WH Lumea C.L  
Lutron - LGCL-153P Lumea C.L  
Legrand - ADTP703TU Adorne  
Lutron - TGCL-153PH-IV Toggler C.L



Oblo in Oak Touch Lamp





Squirrel Cage in Brass Pendant

## WHERE TO FIND TALA

### PROJECTS

Albert Schloss  
Bar Douro  
Be At One  
Beany Green  
Bloomsbury Hotel  
Byron Burger  
Caffè Nero  
Chicken Shop  
Chiltern Firehouse  
Costa Coffee  
Cotonopolis  
Friends of Ours  
Gleneagles Hotel  
Google  
Graham's  
Grind  
Hilton Hotels  
Lab 44  
Levi Strauss & Co  
Marriott Hotels  
MOD Pizza  
Morty & Bobs  
Pizza Express  
Red Bull  
Radisson Hotels  
sketch  
Soho House  
Starbucks  
Tattu  
Tiosk  
The Hoxton Hotel  
The Park Lane Hotel  
Vintners Hall  
Warner Brothers

### RETAILERS

A+R  
ABC Carpet & Home  
Acanthus  
Acorn  
Anthropologie  
Archetypal  
Aria  
Battavia  
Bentalls  
Cocoon  
Crate & Barrel  
de Bijenkorf  
Decorum  
DomésticoShop  
EQ3  
Euroliving Furniture  
Ferguson  
Ferrious  
Fleux  
Flinders  
Globus  
Good Design Store  
Goodhood  
Harrods  
Heal's  
House of Fraser  
Ikarus  
Illums Bolighus  
Industry & Co  
John Lewis  
Journey East  
Judith Norman Collection  
Kanthaus  
La Oca

la Rinascente  
Le Bon Marché Rive Gauche  
Magazin  
Mathes  
Merci  
Montreal Lighting  
OKA  
Oliver Bonas  
Padlifestyle  
Popo  
Prediger  
Remagen  
Ro  
Ruby Design Living  
SCP  
Seattle Lighting  
Selfridges & Co  
Shengaris  
Style Garage  
The Conran Shop  
TreeHouse  
West Elm

## CONTACTS

### BELGIUM

Beluce, Els Vandenbergh  
+32 5034 6186  
info@beluce.be

### FRANCE

Ouhlalaaa, Lionel le Dinh  
+336 1309 6271  
lionel@ouhlalaaa.fr

### GERMANY

Kanthaus, Marc Ulrich Stüvecke  
+49 30 3101 4250  
deutschland@talaled.com

### ICELAND

Lumex, Egill Birgisson  
+35 4568 8388  
egill@lumex.is

### IRELAND & N.IRELAND

LightSource, Anthony Brown  
+44 28 9066 6615  
info@lightingenterprises.com

### ITALY

TJ International, Tiziana Fassina  
+39 03 8191 0120  
info@tjinternationaldesign.it

### GREECE

Sirecled Hellas S.A., Evangelos Bardis  
T +30 210 6220080  
e.bardis@sirecled.com

### LEBANON

Alta Light, Anthony Baroud  
+961 7656 7799  
anthony@altalight.com

### NETHERLANDS

Design Tales, Pascal Zegers  
+316 3888 6666  
info@designtales.nl

### NORTH & LATIN AMERICA

William Symington  
+1 929 294 9574  
northamerica@talaled.com

### PORTUGAL

Oficinas Gerais, Paulo Cruz  
+35 12 2994 2838  
paulo.cruz@oficinasgerais.pt

### SCANDINAVIA

Roomstore, Chris Høiriis Andersen  
+45 2066 9726  
chris@roomstore.dk

### SINGAPORE

Journey East, Anita Sam  
+65 6473 1693  
anita@journeyeast.com

### SPAIN

Smon Barcelona, Jim Esteva  
+349 3363 0618  
jim@smonbcn.es

### SWITZERLAND

Rotel AG, Matthias Burger  
+416 2787 7775  
m.burger@rotel.ch

### UAE

Speclight Associates, Said Sawaf  
+97 15 0656 2383  
said.sawaf@speclightassociates.com

### UNITED KINGDOM

Retail: Philippa Brown  
+44 20 3026 3246  
retail@talaled.com

### Specification: Amy Elstow

+44 20 3026 3246  
projects@talaled.com

*For more information on becoming a distributor for Tala please contact [hello@tala.co.uk](mailto:hello@tala.co.uk)*



Voronoi I in Brass pendants





Gaia in Oak pendant and touch lamp

*Please recycle this catalogue if it is no longer serving its intended purpose.*



*Follow our story:*

Web: [tala.co.uk](http://tala.co.uk) Instagram: [@tala](https://www.instagram.com/tala)