

# massimo

copenhagen



PRICE LIST - EUR Excl. VAT  
JUNE 2023

## EARTH BAMBOO

**HANDWOVEN**

**50% NEW ZEALAND WOOL / 50% BAMBOO**

Pile height: 11-12 mm  
Weight: 4,00 kg/m2

Earth Bamboo combines the softest, most lustrous surface with robustness and durability, making sure that the carpet works perfectly in almost any interior. massimo achieves this by blending soft bamboo fibre with New Zealand wool of the highest quality.

By mixing equal parts wool and bamboo fibres, we are able to create a finished rug with an exceptional level of sturdiness, protecting the rug against wear and tear and pressure marks, without sacrificing on the luxurious look and feel.

Available In:



	140x200 cm 4,59x6,56 ft	170x240 cm 5,58x7,87 ft	200x300 cm 6,56x9,84 ft	250x300 cm 8,20x9,84 ft	300x400 cm 9,84x13,12 ft	dia 240 cm 7,87 ft	-	-	Special sizes/m2 10,76 ft2
NOUGAT ROSE	731	1,070	1,516	1,952	3,161	1,440	-	-	328
CASHMERE	731	1,070	1,516	1,952	3,161	1,889	-	-	328
SOFT GREY	731	1,070	1,516	1,952	3,161	1,889	-	-	328
CONCRETE	731	1,070	1,516	1,952	3,161	1,889	-	-	328
WARM GREY	731	1,070	1,516	1,952	3,935	1,440	-	-	328
MUSTARD YELLOW	731	1,070	1,516	1,952	3,935	1,440	-	-	328
VIBRANT BLUE	731	1,070	1,516	1,952	3,935	1,889	-	-	328
CAMEL	918	1,070	1,516	1,952	3,935	1,889	-	-	328
DESERT SAND	918	1,070	1,516	1,952	3,935	1,889	-	-	328
TERRA COTTA	918	1,070	1,516	2,460	3,935	1,889	-	-	328
CHARCOAL	918	1,115	1,516	2,460	3,935	1,889	-	-	328

All rugs are handmade - size deviation on +/- 3% must be accepted.		Prices marked with grey = special sizes with 14-16 week delivery time	
Certifications:	Colorfastness to light: ISO 105-B02-grade 5	Flammability: 16CFR 1630 (FF-1-70)	Production: SA 8000

## EARTH NATURAL

HANDWOVEN

100% UNDYED NATURAL NEW ZEALAND WOOL

Pile height: 11-12 mm  
Weight: 4.0 kg/m<sup>2</sup>

The latest eco-conscious rugs collection is a celebration of natural properties of wool that takes us back to basics and teaches us to appreciate the beauty of nature. The beauty of this simple yet very contemporary collection is that it can work with any style and space. Minimalism, with a comfortable, warm and welcoming feeling.

Wool has thermo-regulating properties, is easy to care for, and can be repaired and enjoyed for years and years. Naturally stain-resistant, durable, and fire retardant, it can bring a touch of luxury and warmth to your interior.

Available In:



IVORY SILVER GREY LIGHT BEIGE LIGHT GREY DARK GREY

	-	170x240 cm 5,58x7,87 ft	200x300 cm 6,56x9,84 ft	250x350 cm 8,20x11,48 ft	300x400 cm 9,84x13,12 ft	dia 300 cm 9,84x13,12 ft	-	-	Special sizes/m <sup>2</sup> 10,76 ft <sup>2</sup>
Ivory	-	860	1,301	1,881	2,602	1,956	-	-	280
Silver Grey	-	860	1,301	1,881	2,602	1,956	-	-	280
Light Beige	-	860	1,301	1,881	2,602	1,956	-	-	280
Light Grey	-	860	1,301	1,881	2,602	1,956	-	-	280
Dark Grey	-	860	1,301	1,881	2,602	1,956	-	-	280

## EARTH

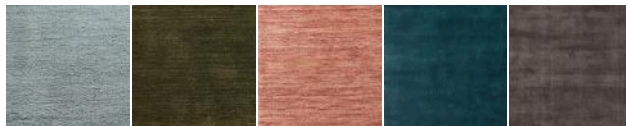
HANDWOVEN

100% NEW ZEALAND WOOL

Pile height: 11-12 mm  
Weight: 4.0 kg/m<sup>2</sup>

Earth rugs are made of the best quality New Zealand wool, which adds natural beauty and ensures easy maintenance. The natural properties of New Zealand wool makes it non-allergenic and fire-resistant, which helps to create a safe and healthy indoor environment, and also it has a natural ability to resist dirt.

Available In:



VERTE GREY MOSS GREEN BLUSH SEA GREEN CHARCOAL

	140x200 cm 4,59x6,56 ft	170x240 cm 5,58x7,87 ft	200x300 cm 6,56x9,84 ft	250x300 cm 8,20x9,84 ft	250x350 cm 8,20x11,48 ft	300x400 cm 9,84x13,12 ft	-	-	Special sizes/m <sup>2</sup> 10,76 ft <sup>2</sup>
VERTE GREY	591	860	1,301	1,602	2,446	2,602	-	-	280
MOSS GREEN	591	860	1,301	1,602	2,446	2,602	-	-	280
BLUSH	591	860	1,301	1,602	2,446	3,355	-	-	280
SEA GREEN	783	860	1,301	2,097	2,446	3,355	-	-	280
CHARCOAL	783	860	1,301	2,097	2,446	3,355	-	-	280

All rugs are handmade - size deviation on +/- 3% must be accepted.		Prices marked with grey = special sizes with 14-16 week delivery time	
Certifications:	Colorfastness to light: ISO 105-B02-grade 5	Flammability: 16CFR 1630 (FF-1-70)	Production: SA 8000

## LORO

### HANDKNOTTED

### ALPACA WOOL / BAMBOO

Pile height: 9-11 mm  
Weight: 5,00 kg/m<sup>2</sup>

The Loro rug is handknotted from finest Alpaca Wool, mixed with a little touch of bamboo fibres, which together give a durable rug with a light shine. Alpaca wool is a natural animal fibre that is fully biodegradable, soft, strong and warm. Alpaca fibres are considered extremely water resistant, while staying highly breathable. They have a higher tensile strength, meaning they can stand up to more pressure or tension before breaking. Bamboo fibres are made of bamboo pulp and have strong durability, stability and tenacity. The production of Bamboo is sustainable as it thrives without any pesticides and also it is biodegradable.

Available In:



CREAM

	-	170x240 cm 5,58x7,87 ft	200x300 cm 6,56x9,84 ft	250x300 cm 8,20x9,84 ft	-	-	-	-	Special sizes/m <sup>2</sup> 10,76 ft <sup>2</sup>
CREAM	-	2,634	3,881	4,537	-	-	-	-	815

## MONTE

### HANDKNOTTED

### 100% MERINO WOOL

Pile height: 9-11 mm  
Weight: 5,00 kg/m<sup>2</sup>

The Monte rug is made of high-quality Merino Wool fibres, which give a luxurious and durable rug. Different pile heights in unique geometric shapes create an elegant pattern with a luxuriously deep and sumptuous texture. Merino sheep grow the most opulent and soft fleece, that is famed for its fineness and delightful touch. The softness that Merino wool brings to carpet in no way diminishes performance. As in all wool, Merino wool is natural, sustainable, renewable and biodegradable. Merino wool carpet is naturally stain, soil and crush resistant.

Available In:



CREAM

NATURAL

	-	170x240 cm 5,58x7,87 ft	200x300 cm 6,56x9,84 ft	250x300 cm 8,20x9,84 ft	-	-	-	-	Special sizes/m <sup>2</sup> 10,76 ft <sup>2</sup>
CREAM	-	2,634	3,881	4,537	-	-	-	-	815
NATURAL	-	2,634	3,881	4,537	-	-	-	-	815

All rugs are handmade - size deviation on +/- 3% must be accepted.				Prices marked with grey = special sizes with 14-16 week delivery time			
Certifications:	Colorfastness to light: ISO 105-B02-grade 5	Flammability: 16CFR 1630 (FF-1-70)	Production: SA 8000				

## BAMBOO

HANDWOVEN

100% BAMBOO

Pile height: 10-11 mm  
Weight: 4,00 kg/m<sup>2</sup>

Massimo's BAMBOO rugs are made of 100% bamboo fibres, which gives a luxurious feeling due to the unique softness and shiny surface. Bamboo fibres are made of bamboo pulp and have strong stability and tenacity. The quality of the fibres minimizes peeling to almost nothing. The production of Bamboo is sustainable as it thrives without any pesticides and also it is biodegradable and thus a very eco-friendly material. Ideal choice for bedrooms and living rooms, adding a soft and luminous texture.

Available In:



[LIGHT GREY](#) [GREY](#) [STIFFKEY BLUE](#) [LIGHT BROWN](#) [COPPER](#) [ROSE DUST](#)

	140x200 cm 4,59x6,56 ft	170x240 cm 5,58x7,87 ft	200x300 cm 6,56x9,84 ft	250x300 cm 8,20x9,84 ft	300x400 cm 9,84x13,12 ft	dia 240 cm 7,87 ft	-	-	Special sizes/m <sup>2</sup> 10,76 ft <sup>2</sup>
LIGHT GREY	752	1,096	1,612	2,027	3,247	1,951	-	-	339
GREY	752	1,096	1,612	2,027	3,247	1,951	-	-	339
STIFFKEY BLUE	752	1,096	1,612	2,027	3,247	1,951	-	-	339
LIGHT BROWN	752	1,096	1,612	2,027	4,065	1,951	-	-	339
COPPER	752	1,096	1,612	2,027	4,065	1,951	-	-	339
ROSE DUST	948	1,096	1,612	2,027	4,065	1,951	-	-	339

## KARMA

HANDWOVEN

100% RECYCLED BAMBOO

Pile height: 5-7 mm  
Weight: 4,00 kg/m<sup>2</sup>

The Karma rug is made of recycled bamboo fibers, which give a durable rug with a light shine that is easy to maintain. Bamboo fibers are made of bamboo pulp and have strong durability, stability and tenacity. The quality of the fibers minimizes peeling to almost nothing. The production of Bamboo is sustainable as it thrives without any pesticides and also it is biodegradable and thus a very eco-friendly material.

Available In:



[LIGHT GREY](#) [NOUGAT BROWN](#) [WASHED BLUE](#) [OLIVE GREEN](#)

	-	160x230 cm 5,25x7,55 ft	200x300 cm 6,56x9,84 ft	250x350 cm 8,20x11,48 ft	dia 300 cm 9,84x13,12 ft	-	-	-	Special sizes/m <sup>2</sup> 10,76 ft <sup>2</sup>
LIGHT GREY	-	623	1,010	1,459	1,505	-	-	-	210
NOUGAT BROWN	-	623	1,010	1,459	1,505	-	-	-	210
WASHED BLUE	-	623	1,010	1,459	1,887	-	-	-	210
OLIVE GREEN	-	623	1,010	1,459	1,887	-	-	-	210

All rugs are handmade - size deviation on +/- 3% must be accepted.		Prices marked with grey = special sizes with 14-16 week delivery time	
Certifications:	Colorfastness to light: ISO 105-B02-grade 5	Flammability: 16CFR 1630 (FF-1-70)	Production: SA 8000



## REPEAT

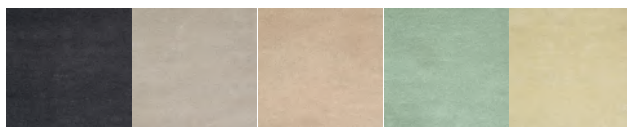
HANDTUFTED

RECYCLED PET

Pile height: 15-18 mm Weight: 4,50 kg/m<sup>2</sup> RePeat collection represents an innovative and sustainable take on textiles. Handtufted from recycled plastic (rPET), with an additional OEKO-TEX cotton layer on the backside, making it suitable for any type of floor.

A lightweight fibre obtained from the material produced through the process of recovery and reuse of PET, presents a high resistance to wear and tear, and offers good thermal properties, which makes it a perfect choice for textiles at home and commercial settings. The composition makes the RePeat rugs both earth-friendly and easy to care for. The fibre resists stains, mold, mildew and moisture. You can clean them simply by using a garden hose or spot clean with a damp sponge.

Available in:



GRAPHITE CREAM BEIGE PISTACHIO PASTEL YELLOW

	-	160x230 cm 5,58x7,87 ft	200x300 cm 6,56x9,84 ft	250x350 cm 8,20x11,48 ft	dia 300 cm 9,84 ft	-	-	-	Special sizes/m <sup>2</sup> 10,76 ft <sup>2</sup>
GRAPHITE	-	623	1,010	1,459	1,505	-	-	-	210
CREAM	-	623	1,010	1,459	1,505	-	-	-	210
BEIGE	-	623	1,010	1,459	1,505	-	-	-	210
PISTACHIO	-	623	1,010	1,459	1,505	-	-	-	210
PASTEL YELLOW	-	623	1,010	1,459	1,505	-	-	-	210

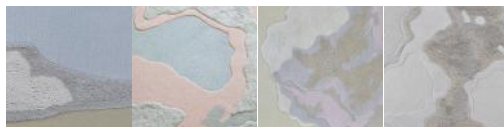
## CLOUD9 by FACNE

HANDWOVEN & HANDTUFTED

100% NEW ZEALAND WOOL

Pile height: 5-30 mm Weight: 4,00 kg/m<sup>2</sup> The new series of vibrant rugs, by FACNE Studio for massimo, capture playfulness in the form of contemporary artworks. Drawing inspiration from the temperaments of the sky, CLOUD9 series are handwoven and handtufted with different weaving techniques from 100% New Zealand Wool. A poetic snapshot of clouds seamlessly created from different pile heights and a boucle weaving technique.

Available In:



MORNING DAY AFTERNOON CLOUDY

	140x200 cm 4,59x6,56 ft	170x240 cm 5,58x7,87 ft	200x300 cm 6,56x9,84 ft	250x350 cm 8,20x11,48 ft	300x400 cm 9,84x13,12 ft	-	-	-	Special sizes/m <sup>2</sup> 10,76 ft <sup>2</sup>
MORNING	731	1,338	1,516	2,870	3,935	-	-	-	328
DAY	731	1,338	1,516	2,870	3,935	-	-	-	328
AFTERNOON	731	1,338	1,516	2,870	3,935	-	-	-	328
CLOUDY	731	1,338	1,516	2,870	3,935	-	-	-	328



Facne Design Studio was founded by Mathilde Witt Møhlholm and Kamilla Schultz. Their primary field of experience is interior design, graphic design, furniture design, exhibition design, concept development and trend forecasting. Their way of working revolves around user needs. For each project they carefully uncover unknown needs and dive into their own in-depth knowledge of materials. Honing in on the unredeemed potential of each project they always end up transforming ambitious ideas into inspiring and beautiful designs.

All rugs are handmade - size deviation on +/- 3% must be accepted.		Prices marked with grey = special sizes with 14-16 week delivery time		
Certifications:	Colorfastness to light: ISO 105-B02-grade 5	Flammability: 16CFR 1630 (FF-1-70)	Production: SA 8000	

## STARDUST

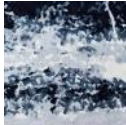
HANDKNOTTED

50% NEW ZEALAND WOOL / 50% BAMBOO

Pile height: 10-11 mm  
Weight: 4,0 kg/m<sup>2</sup>

Stardust rug is made of best quality New Zealand wool mixed with Bamboo fibers. The combination of New Zealand wool and Bamboo gives a very durable rug with a light shine which is easy to maintain. The quality of the fibres minimizes peeling to almost nothing.

Available in:



BLUE

	-	170x240 cm 5,58x7,87 ft	200x300 cm 6,56x9,84 ft	-	-	-	-	-	Special sizes/m2 10,76 ft2
BLUE	-	2,483	3,655	-	-	-	-	-	763

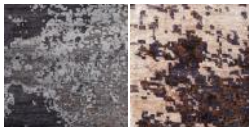
## MOON NIGHT / COPPER MOON / SPACE SURFACE / OCEAN

HANDKNOTTED

Pile height: 10-11 mm  
Weight: 4,00 kg/m<sup>2</sup>

High quality, handknotted rugs made of 100% bamboo fibres, which give a luxurious feeling due to the unique softness and shiny surface. Bamboo fibres are made of bamboo pulp and have strong durability, stability and tenacity. The quality of the fibres minimizes peeling to almost nothing.

Available In:



MOON NIGHT

COPPER MOON

100% BAMBOO



SPACE SURFACE

OCEAN

50% NEW ZEALAND WOOL / 50% BAMBOO

	-	170x240 cm 5,58x7,87 ft	200x300 cm 6,56x9,84 ft	dia 200 cm 6,56 ft	dia 240 cm 7,87 ft	-	-	-	Special sizes/m2 10,76 ft2
MOON NIGHT	-	2,483	3,655	2,483	3,655	-	-	-	763
COPPER MOON	-	2,483	3,655	2,483	3,655	-	-	-	763
SPACE SURFACE	-	2,483	3,655	2,483	3,655	-	-	-	763
OCEAN	-	2,483	4,581	2,483	4,581	-	-	-	763

All rugs are handmade - size deviation on +/- 3% must be accepted.			Prices marked with grey = special sizes with 14-16 week delivery time		
Certifications:	Colorfastness to light: ISO 105-B02-grade 5	Flammability: 16CFR 1630 (FF-1-70)	Production: SA 8000		

## ESCAPE by Space Copenhagen

HANDWOVEN

100% UNDYED NATURAL NEW ZEALAND WOOL

Pile height: N/A  
Weight: 2,00 kg/m<sup>2</sup>

Kelim rugs by Space Copenhagen for massimo focus on the subdued colour tones and the natural feel. The designer's wish has been to design a modern collection of minimal, yet tactile and crafted rugs with subtle details - to support and enhance the warmth, softness, human layer and ambience in a modern space.

Available In:



	90x250 cm 2,11x8,20 ft	170x240 cm 5,58x7,87 ft	200x300 cm 6,56x9,84 ft	250x350 cm 8,20x11,48 ft	300x400 cm 9,84x13,12 ft	-	-	-	Special sizes/m <sup>2</sup> 10,76 ft <sup>2</sup>
Chalk	462	827	1,220	1,774	2,435	-	-	-	269
Chalk with fringes	-	827	1,220	1,774	2,435	-	-	-	269
Light Beige	462	827	1,220	1,774	2,435	-	-	-	269
Light Beige with stitches	-	827	1,220	1,774	2,435	-	-	-	269
Muscat	462	827	1,220	1,774	2,435	-	-	-	269
Muscat with fringes	-	827	1,220	1,774	2,435	-	-	-	269
Stone	462	827	1,220	1,774	2,435	-	-	-	269
Stone with stitches	-	827	1,220	1,774	2,435	-	-	-	269

Rug Underlay Included



Signe Bindslev Henriksen and Peter Bundgaard Rützou, Space Copenhagen is a design studio that works across multiple disciplines from interior design for private homes, hotels and restaurants all over the world to art installations and art direction, furniture, lighting and refined objects. The studio's intuitive approach embodies designs that are distinctively shaped by given circumstances, functional needs, and a fundamental interest in human behavior. It is a sense of and belief in a slow aesthetic that centers quality and longevity. Their work is characterized by meticulous attention to the concept and details of every project, and a steady focus on refining design ideas across disciplines to arrive at a solution which is as coherent as it is beautiful.

## NATURAL KELIM

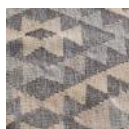
HANDWOVEN

100% NEW ZEALAND WOOL

Pile height: N/A  
Weight: 2,5 kg/m<sup>2</sup>

Each rug is unique and the combination of traditional weaving methods and patterns together with the natural colored wool provides unique rugs with high integrity. It has a natural ability to resist dirt and is sustainable, natural and biodegradable.

Available In:



LIGHT GREY

	-	170x240 cm 5,58x7,87 ft	200x300 cm 6,56x9,84 ft	-	-	-	-	-	Special sizes/m <sup>2</sup> 10,76 ft <sup>2</sup>
LIGHT GREY	-	790	1,167	-	-	-	-	-	-

Rug Underlay Included

All rugs are handmade - size deviation on +/- 3% must be accepted.				Prices marked with grey = special sizes with 14-16 week delivery time					
Certifications:	Colorfastness to light: ISO 105-B02-grade 5			Flammability: 16CFR 1630 (FF-1-70)			Production: SA 8000		



## TATAMI by OEO Studio

### HANDWOVEN

Pile height: N/A  
Weight: 2,5 kg/m<sup>2</sup>

The new collection of luxurious rugs by OEO Studio for massimo draws inspiration from Tatami mats in traditional Japanese-style rooms. The collection has a very simple, minimal look but it's warm, elevated and grounding at the same time. All rugs are woven by hand to create an authentic look that pairs well with any interior design style. Just like the early original tatami, these rugs have a thinner structure and can be folded.

Available In:



		170x240 cm 5,58x7,87 ft	200x300 cm 6,56x9,84 ft	250x350 cm 8,20x11,48 ft	300x400 cm 9,84x13,12 ft	-	-	-	Special sizes/m <sup>2</sup> 10,76 ft <sup>2</sup>
GREY	-	860	1,301	1,881	2,602	-	-	-	280
GREEN	-	860	1,301	1,881	2,602	-	-	-	280
ORANGE	-	860	1,301	1,881	2,602	-	-	-	280
BURGUNDY	-	860	1,301	1,881	2,602	-	-	-	280
Rug Underlay Included									

## FRAGMENTS by OEO Studio

### HANDTUFTED

**50% NEW ZEALAND WOOL / 50% BAMBOO**

Pile height: 15-18 mm  
Weight: 4,50 kg/m<sup>2</sup>

The series of luxurious carpets by OEO Studio for massimo has a distinctly graphic character. The image - or signifier - is after all the particular legacy of man's presence on earth through millennia. Where two colours meet, their contours are hand cut. This procedure helps each motif to stand out. Whilst the process is time-consuming, the result is certainly something to treasure.

Available In:



		170x240 cm 5,58x7,87 ft	200x300 cm 6,56x9,84 ft	250x350 cm 8,20x11,48 ft	300x400 cm 9,84x13,12 ft	-	-	-	Special sizes/m <sup>2</sup> 10,76 ft <sup>2</sup>
FRAGMENT 1	-	995	1,414	2,064	3,613	-	-	-	301
FRAGMENT 2	-	995	1,414	2,064	3,613	-	-	-	301
FRAGMENT 2 WITH BORDER	-	995	1,414	2,634	3,613	-	-	-	301
FRAGMENT 3	-	995	1,414	2,064	3,613	-	-	-	301
FRAGMENT 4	-	995	1,414	2,634	3,613	-	-	-	301



Thomas Lykke and Anne-Marie Buemann, founders of OEO Studio, have established a distinct aesthetic which bridges the difference between individual detail and overall décor. Their work can be seen in individual homes, hotels, furniture production and other applications. Their philosophy allows for each project to develop its own 'soul'. This is a factor of both the natural materials they use and the vision a customer has in mind - as is the case with massimo's 'Fragments' series. Colours and materials are often deployed in unexpected ways - each time taking inspiration from their potential to provide a convivial backdrop for human interaction

All rugs are handmade - size deviation on +/- 3% must be accepted.		Prices marked with grey = special sizes with 14-16 week delivery time	
Certifications:	Colorfastness to light: ISO 105-B02-grade 5	Flammability: 16CFR 1630 (FF-1-70)	Production: SA 8000

## HEMP by Tanja Kirst

HANDWOVEN

100% ITALIAN HEMP

Pile height: N/A

Weight: 3,00 kg/m<sup>2</sup>

The collection by Tanja Kirst emerged from the artist's master project "Re: Thinking Hemp" that aims to produce raw textile materials from sustainably cultivated hemp. Handwoven with Italian hemp yarn, each thread consists of 50 thin threads spun together and dyed in bio colour.

The colourful palette of the collection is a tribute to nature, while the unique pattern with flat weave and colour and weft effect, creates a different experience every time you enter the room. The rugs are bio-dyed, which gives them their natural colour hues that are woven in optical repetitions and interact depending on the light.

Available In:



MULTI

RED/YELLOW

NOUGAT ROSE

GREY

	-	-	200x300 cm 6,56x9,84 ft	250x350 cm 8,20x11,48 ft	-	-	-	-	Special sizes/m <sup>2</sup> 10,76 ft <sup>2</sup>
MULTI	-	-	1,827	2,290	-	-	-	-	-
RED/YELLOW	-	-	1,827	2,290	-	-	-	-	-
NOUGAT ROSE	-	-	1,827	2,290	-	-	-	-	-
GREY	-	-	1,827	2,290	-	-	-	-	-
Rug Underlay Included									



Tanja Kirst's work is characterized by reflection on thoughts and details that you don't immediately recognize. This includes subtle colour transition and gradation into shades. Tanja Kirst works with hemp as a sustainable alternative in textile design, rethinking a well-known material in a space between design and craftsmanship, she gives this eco-friendly material a whole new appeal. With interaction and observation, all the functions and details can be experienced over time. This experimental process and way of designing is developed with an intention to add more value to the textile – and to give a poetic approach and longevity to the product.

All rugs are handmade - size deviation on +/- 3% must be accepted.		Prices marked with grey = special sizes with 14-16 week delivery time	
Certifications:	Colorfastness to light: ISO 105-B02-grade 5	Flammability: 16CFR 1630 (FF-1-70)	Production: SA 8000

## RYA

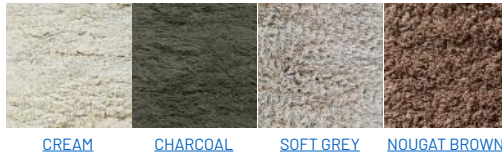
**HANDWOVEN**

**100% NEW ZEALAND WOOL**

Pile height: 45 mm  
Weight: 4,2 kg/m<sup>2</sup>

The Rya rug is made of 100% New Zealand wool, which adds natural beauty and ensures easy maintenance. The natural properties of New Zealand wool makes it non-allergenic and fire-resistant which helps to create a safe and healthy indoor environment, and also it has a natural ability to resist dirt.

Available In:



	140x200 cm 4,59x6,56 ft	170x240 cm 5,58x7,87 ft	200x300 cm 6,56x9,84 ft	-	-	-	-	-	Special sizes/m <sup>2</sup> 10,76 ft <sup>2</sup>
CREAM	666	973	1,435	-	-	-	-	-	301
CHARCOAL	666	973	1,435	-	-	-	-	-	301
SOFT GREY	666	973	1,435	-	-	-	-	-	301
NOUGAT BROWN	843	973	1,806	-	-	-	-	-	301

## BUBBLES

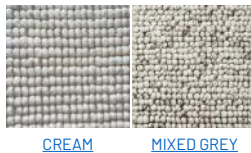
**HANDWOVEN**

**100% FELTED NEW ZEALAND WOOL**

Pile height: 15-18 mm  
Weight: 5,3 kg/m<sup>2</sup>

The soft graphic expression of this rug adds a cool nordic ambience to your home. The felted wool is easy to maintain – the natural properties of New Zealand wool makes it non-allergenic and fire-resistant which helps to create a safe and healthy indoor environment

Available In:



	140x200 cm 4,59x6,56 ft	170x240 cm 5,58x7,87 ft	200x300 cm 6,56x9,84 ft	-	-	-	-	-	Special sizes/m <sup>2</sup> 10,76 ft <sup>2</sup>
CREAM	849	1,231	1,806	-	-	-	-	-	382
MIXED GREY	1,069	1,231	2,290	-	-	-	-	-	382

All rugs are handmade - size deviation on +/- 3% must be accepted.			Prices marked with grey = special sizes with 14-16 week delivery time			
Certifications:	Colorfastness to light: ISO 105-B02-grade 5	Flammability: 16CFR 1630 (FF-1-70)	Production: SA 8000			

## BELIZE

WOVEN

100% SISAL

Pile height: N/A  
Weight: 3,5-3,7 kg/m<sup>2</sup>

Belize is made in a simple design, yet with a lot of character. Natural rug in 100% Sisal with rubber backing. Sisal is sustainable, natural and biodegradable and has a strong durability.

**With anti-slip rubber backing.**

Available In:



TAUPE

NATURAL

	80x150 cm 2,62x4,92 ft	90x200 cm 2,95x6,56 ft	90x300 2,95 x9,84 ft	160x240 cm 5,25x7,87 ft	240x320 cm 7,87x10,5 ft	300x400 cm 9,84x13,12 ft	dia 200 cm 6,56 ft	dia 245 cm 8,20 ft	Special sizes/m2 10,76 ft2
TAUPE	188	274	414	575	1,150	1,801	602	935	-
NATURAL	-	274	-	575	1,150	-	602	935	-

## SUMACE

HANDKNOTTED

100% HEMP/JUTE

Pile height: N/A  
Weight: 3,0-3,2 kg/m<sup>2</sup>

Strong, sustainable and timelessly stylish. Sumace rugs are handknotted in 100% Hemp, which gives a sophisticated rustic expression and appeals to the basics in life. Hemp has a high abrasion resistance and its softness increases over time. It is sustainable, natural and biodegradable material that has a strong durability.

Available In:



NATURAL

NATURAL WITH  
FRINGES

BLACK

BLACK WITH  
FRINGES

NAVY

	-	170x240 cm 5,58x7,87 ft	200x300 cm 6,56x9,84 ft	250x300 cm 8,20x9,84 ft	-	-	-	-	Special sizes/m2 10,76 ft2
Natural - with fringes	-	952	1,392	1,763	-	-	-	-	301
Natural - without fringes	-	952	1,392	1,763	-	-	-	-	301
Black - with fringes	-	952	1,392	1,763	-	-	-	-	301
Black - without fringes	-	952	1,392	1,763	-	-	-	-	301
Navy - without fringes	-	952	1,392	1,763	-	-	-	-	301
Rug Underlay Included									

All rugs are handmade - size deviation on +/- 3% must be accepted.			Prices marked with grey = special sizes with 14-16 week delivery time		
Certifications:	Colorfastness to light: ISO 105-B02-grade 5	Flammability: 16CFR 1630 (FF-1-70)	Production: SA 8000		

## VINTAGE

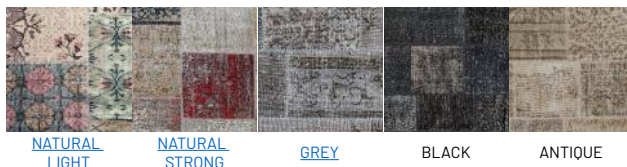
**HANDKNOTTED**

**100% WOOL**

Pile height: N/A  
Weight: 3,8 kg/m<sup>2</sup>

Unique rugs made of semi-old Anatolian handknotted rugs which are transferred into beautiful patchwork rugs by massimo. Choose your colour combination and we guarantee that you will get the most beautiful unique handmade rug with a long lasting value which is easy to maintain.

Available In:



	80x250 cm 2,62x8,20 ft	140x200 cm 4,59x6,56 ft	170x240 cm 5,58x7,87 ft	200x300 cm 6,56x9,84 ft	250x350 cm 8,20x11,48 ft	300x400 cm 9,84x13,12 ft	dia 250 cm 8,20 ft	dia 300 cm 9,84 ft	Special sizes/m <sup>2</sup> 10,76 ft <sup>2</sup>
NATURAL LIGHT	591	849	1,210	1,774	2,591	3,548	1,849	2,661	371
NATURAL STRONG	591	849	1,210	1,774	2,591	3,548	1,849	2,661	371
GREY	591	1,039	1,210	1,774	2,591	3,548	1,849	2,661	371
BLACK	742	1,039	1,514	2,226	3,246	4,452	2,319	3,339	371
ANTIQUE	742	1,039	1,514	2,226	3,246	4,452	2,319	3,339	371

## TRASH

**HANDKNOTTED**

**100% WOOL**

Pile height: N/A  
Weight: 3,8 kg/m<sup>2</sup>

Unique rugs transformed from traditional centuries old handknotted rugs. We wash them, some we use as they are, some we trash, some we color and some we bleach. We strive to obtain that expression of decadent decay which adds so much class to all kind of environments. The rugs are easy to maintain and the more you use them the more character they get.

	-	170x240 cm 5,58x7,87 ft	200x300 cm 6,56x9,84 ft	-	250x350 cm 8,20x11,48 ft	300x400 cm 9,84x13,12 ft	-	-	Special sizes/m <sup>2</sup> 10,76 ft <sup>2</sup>
All Colors	-	1,141	1,677	-	2,446	3,355	-	-	280

Custom sizes available In stock - please ask for stock list

## RUG UNDERLAY

When choosing a perfect rug, it is important to not forget the underlay. Rug underlay will improve how your rug feels underfoot, but it will also help maintain your rug as well as provide extra protection against moisture. Underlay carpets are also useful as noise protectors as they minimize the sounds such as footsteps, voices or moving furniture.

	80x200 cm 2,62x6,56 ft	90x250 cm 2,11x8,20 ft	140x200 cm 4,59x6,56 ft	170x240 cm 5,58x7,87 ft	200x300 cm 6,56x9,84 ft	250x300 cm 8,20x9,84 ft	250x350 cm 8,20x11,48 ft	300x400 cm 9,84x13,12 ft	Special sizes/m2 10,76 ft2
<b>RUG UNDERLAY</b>	40	56	62	83	126	185	210	253	25

## TREATMENTS

TREATMENTS	Price M2
MOTH PROOFING	16
FIRE RETERDANT	32
SCOTCH GUARD	22

## SAMPLES

INDIVIDUAL SAMPLES	NET Price/Piece
15X15 CM	5
30X30 CM	15
40X60 CM	39

COLLECTION SET	NET Price/Set
TROLLEY FOR SAMPLES	336
15x15 CM	108
40x60 CM	578